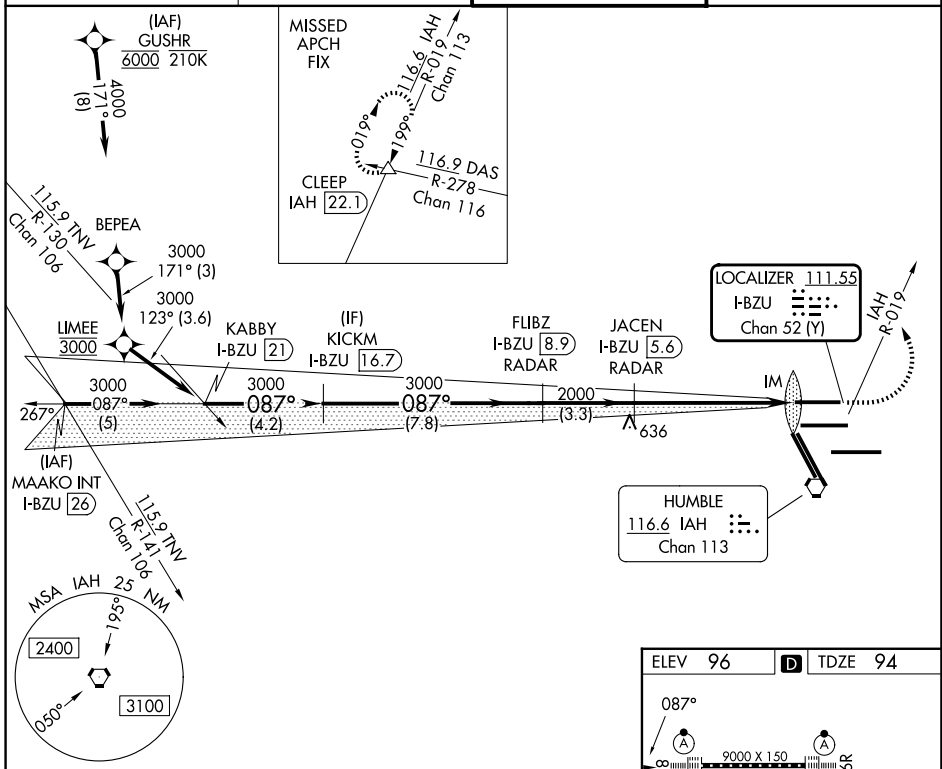


LOC/DME I-BZU 111.55	APP CRS 087°	Rwy Ldg 9000
Chan 52 (Y)		TDZE 94
		Apt Elev 96

ILS or LOC RWY 8L

GEORGE BUSH INTCNL/HOUSTON (IAH)

DME required. From GUSHR. RNAV 1-GPS required.		ALSF-2	MISSED APPROACH: Climb to 600 then climbing left turn to 4000 on IAH VORTAC R-019 to CLEEP INT/IAH 22.1 DME and hold.
Simultaneous approach authorized with Rwy 8R and Rwy 9.			
D-ATIS 124.05	HOUSTON APP CON 120.05 379.1 E 124.35 316.15 W	HOUSTON TOWER 120.725 290.2	GND CON 118.575



SC-5, 16 APR 2026 to 14 MAY 2026

SC-5, 16 APR 2026 to 14 MAY 2026

	* LOC only		600	4000	CLEEP
	KABBY I-BZU [21]	KICKM I-BZU [16.7]	FLIBZ I-BZU [8.9] RADAR	JACEN I-BZU [5.6] RADAR	I-BZU DME ANTENNA
	3000 087°		3000	2000	I-BZU [1.2] IM
	GS 3.00° TCH 59		2000	I-BZU [0.2]	
	4.2 NM	7.8 NM	3.3 NM	4.4 NM	1.3 0.1
CATEGORY	A	B	C	D	E
S-ILS 8L	294/18		200 (200-½)		
S-LOC 8L	600/24	506 (600-½)	600/55	506 (600-1)	

ELEV 96 **D** TDZE 94

087°

9000 X 1.50 2000 X 1.50 10000 X 1.50

26K 26L 27

TDZ/CL Rwys 8R, 8L, 15R, 26R, 26L, 27 and 33L

HIRL all Rwys

FAF to MAP 5.8 NM

Knots	60	90	120	150	180
Min:Sec	5:48	3:52	2:54	2:19	1:56

ILS or LOC RWY 8L