

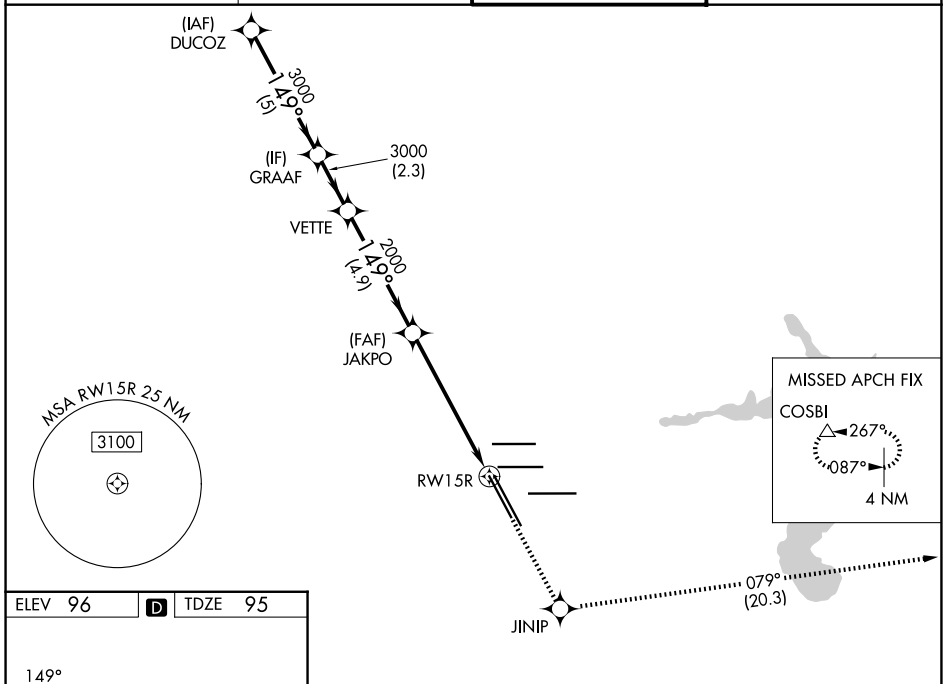
WAAS CH 97599 W15A	APP CRS 149°	Rwy Ldg 10000 TDZE 95 Apt Elev 96
--	------------------------	--

RNAV (GPS) RWY 15R

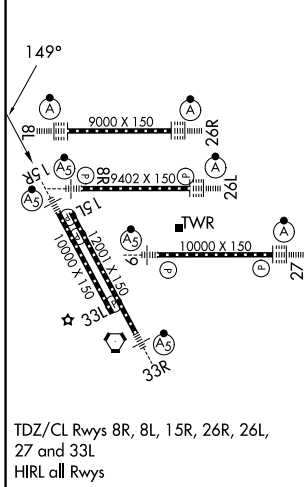
GEORGE BUSH INTCNL/HOUSTON (IAH)

RADAR required for procedure entry. RNP APCH.		MALSR 	MISSED APPROACH: Climb to 2000 direct JINIP and left turn on track 079° to COSBI and hold.
<p>⚠ For uncompensated Baro-VNAV systems, LNAV/VNAV NA below -3°C or above 54°C. For inop ALS, increase LPV Cat E visibility to RVR 4000, LNAV/VNAV all Cats visibility to RVR 5500, and LNAV Cat C/D/E visibility to 1 3/8 SM.</p>			

D-ATIS 124.05	HOUSTON APP CON 120.05 379.1 E 124.35 316.15 W	HOUSTON TOWER 127.3 288.25	GND CON 121.7
-------------------------	--	--------------------------------------	-------------------------



ELEV 96	D	TDZE 95
---------	----------	---------



TDZ/CL Rwy 8R, 8L, 15R, 26R, 26L, 27 and 33L
HIRL all Rwy

VGSi and RNAV glidepath not coincident (VGSi Angle 3.00/TCH 71).		2000 JINIP	tr 079°	COSBI	
DUCOZ	GRAAF	VETTE	JAKPO	RWY 15R	
3000	3000	3000	2000		
GP 3.00°				*LNAV only.	
TCH 54				*1.3 NM to RWY 15R	
	5 NM	2.3 NM	4.9 NM	4.5 NM	
				1.3 NM	
CATEGORY	A	B	C	D	E
LPV DA		295/18	200 (200-1/2)		
LNAV/VNAV DA		460/35	365 (400-3/4)		
LNAV MDA	580/24	485 (500-1/2)	580/50	485 (500-1)	