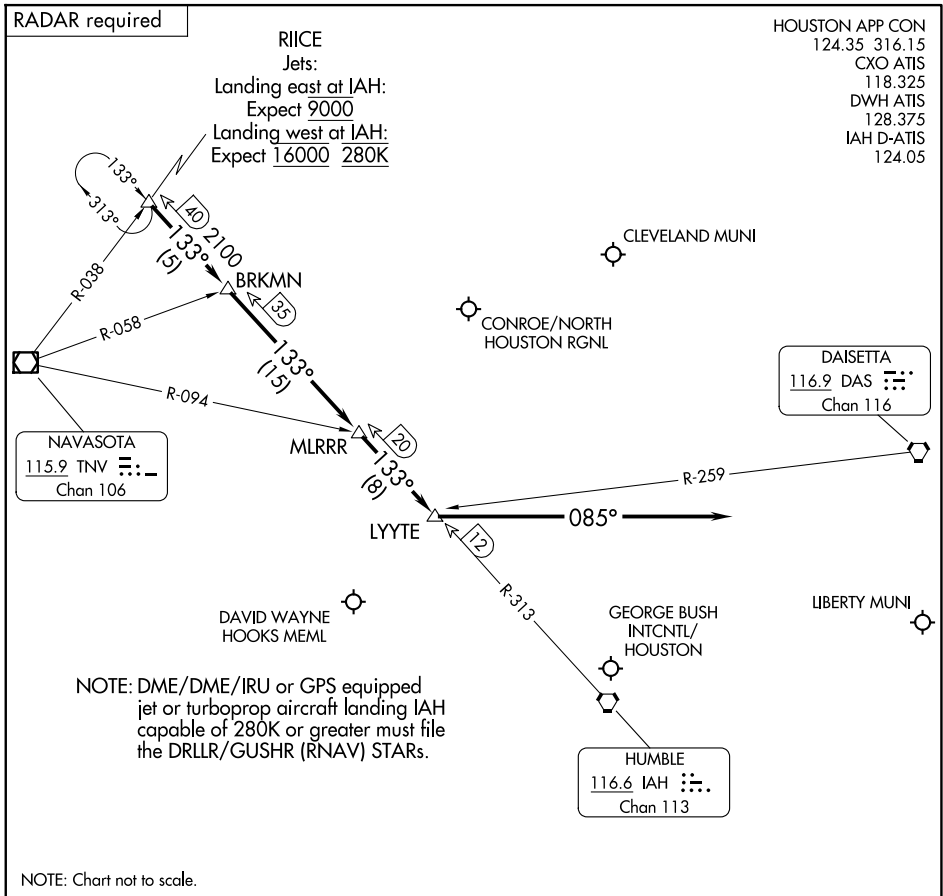


RIICE ONE ARRIVAL

Arrival Routes

HOUSTON, TEXAS



SC-5, 16 APR 2026 to 14 MAY 2026

SC-5, 16 APR 2026 to 14 MAY 2026

ARRIVAL ROUTE DESCRIPTION

GEORGE BUSH INTCNL/HOUSTON (IAH):

... From over RIICE on IAH R-313 to BRKMN, to MLRRR, to LYTE.

LANDING RUNWAYS 26L/R or 27:

... Fly heading 085° for vectors to final approach course.

LANDING ALL OTHER RUNWAYS:

... Expect vectors to final approach course at or prior to LYTE.

FOR ALL OTHER AIRPORTS:

... From over RIICE on IAH R-313 to BRKMN, thence as depicted to LYTE. Expect vectors to final approach course at or prior to LYTE.