

RITAA SEVEN DEPARTURE (RNAV)

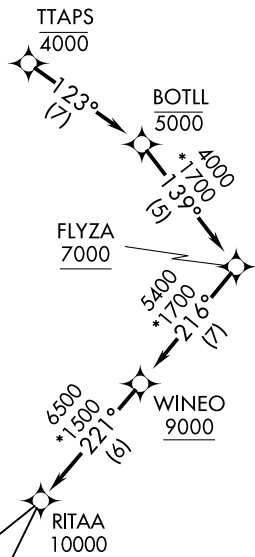
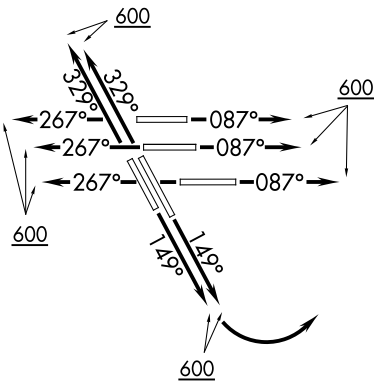
AL-5461 (FAA)

HOUSTON, TEXAS

D-ATIS
 124.05
 CLNC DEL
 128.1
 CPDLC
 GND CON
 118.575 (Rwys 8L/R, 26L/R, 9, 27)
 121.7 (Rwys 15L/R, 33L/R)
 HOUSTON TOWER
 120.725 290.2 (Rwys 8L, 26R)
 125.35 290.2 (Rwys 8R, 26L)
 127.3 288.25 (Rwys 15L/R, 33L/R)
 135.15 290.2 (Rwys 9, 27)
 HOUSTON DEP CON
 127.125 269.075

RNAV - 1 DME/DME/IRU or GPS.
 RADAR required.

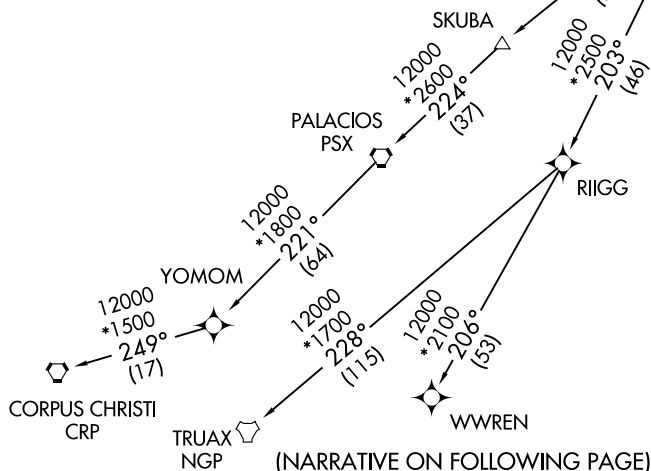
**TOP ALTITUDE:
 16000**



TAKEOFF MINIMUMS

Rwys 8L/R, 9, 15L/R, 26L/R, 27, 33L/R:

Standard with minimum climb of 500' per NM to 800.



(NARRATIVE ON FOLLOWING PAGE)

NOTE: Chart not to scale.

SC-5, 16 APR 2026 to 14 MAY 2026

SC-5, 16 APR 2026 to 14 MAY 2026



DEPARTURE ROUTE DESCRIPTION

TAKEOFF RUNWAYS 8L/R, 9: Climb on heading 087° to 600, for RADAR vectors to cross BOTLL at or below 5000, thence

TAKEOFF RUNWAYS 15L/R: Climb on heading 149° to 600, then left turn direct to cross TTAPS at or below 4000, then on track 123° to cross BOTLL at or below 5000, thence

TAKEOFF RUNWAYS 26L/R, 27: Climb on heading 267° to 600, for RADAR vectors to cross BOTLL at or below 5000, thence

TAKEOFF RUNWAYS 33L/R: Climb on heading 329° to 600, for RADAR vectors to cross BOTLL at or below 5000, thence

. . . . on track 139° to cross FLYZA at or above 7000, then on track 216° to cross WINEO at or above 9000, then on track 221° to cross RITAA at or above 10000, then on (transition). Maintain 16000. Expect filed altitude 10 minutes after departure.

CORPUS CHRISTI TRANSITION (RITAA7.CRP)

PALACIOS TRANSITION (RITAA7.PSX)

TRUAX TRANSITION (RITAA7.NGP)

WWREN TRANSITION (RITAA7.WWREN)

YOMOM TRANSITION (RITAA7.YOMOM)

SC-5, 16 APR 2026 to 14 MAY 2026

SC-5, 16 APR 2026 to 14 MAY 2026