


APP CRS	Rwy Ldg	9402
267°	TDZE	95
	Apt Elev	96

RNAV (RNP) Y RWY 26L

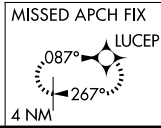
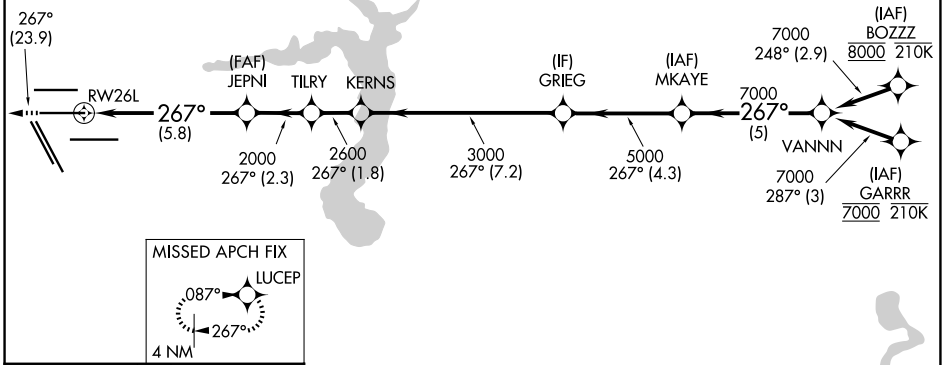
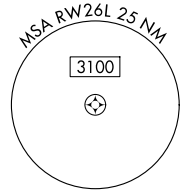
GEORGE BUSH INTCNL/HOUSTON (IAH)

RNP AR APCH - GPS.

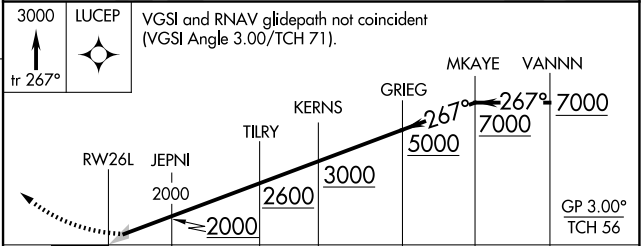
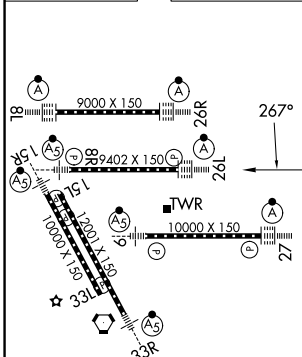
⚠ For uncompensated Baro-VNAV systems, procedure NA below -3°C or above 54°C. Simultaneous approach authorized. For inop ALS, increase RNP 0.13 all Cats visibility to RVR 5100, and RNP 0.30 all Cats visibility to 1½ SM.

ALSF-2  MISSED APPROACH: Climb to 3000 on track 267° to LUCEP and hold.

D-ATIS 124.05	HOUSTON APP CON 120.05 379.1 E 124.35 316.15 W	HOUSTON TOWER 125.35 290.2	GND CON 118.575
-------------------------	--	--------------------------------------	---------------------------



ELEV 96	D	TDZE 95
---------	----------	---------



CATEGORY	A	B	C	D
RNP 0.13 DA		414/40	319 (400-¾)	
RNP 0.30 DA		549/55	454 (500-1)	

TDZ/CL Rwy 8R, 8L, 15R, 26R, 26L, 27 and 33L
HIRL all Rwy

AUTHORIZATION REQUIRED

SC-5, 16 APR 2026 to 14 MAY 2026

SC-5, 16 APR 2026 to 14 MAY 2026