

APP CRS	Rwy Ldg	9000
267°	TDZE	96
	Apt Elev	96

RNAV (RNP) Y RWY 26R

GEORGE BUSH INTCNL/HOUSTON (IAH)

▼ For uncompensated Baro-VNAV systems, procedure NA below -3°C (27°F) or above 54°C (130°F). GPS required. Simultaneous approach authorized. For inop ALS, increase RNP 0.11 all Cats visibility to RVR 5000 and increase RNP 0.15 all Cats visibility to 1½ SM. Use of FD or AP providing RNAV track guidance required during simultaneous operations.

ALSF-2



MISSED APPROACH: Climb to 600 then climbing right turn to 3000 direct PEPBI and hold.

D-ATIS	HOUSTON APP CON
124.05	120.05 379.1 E
	124.35 316.15 W

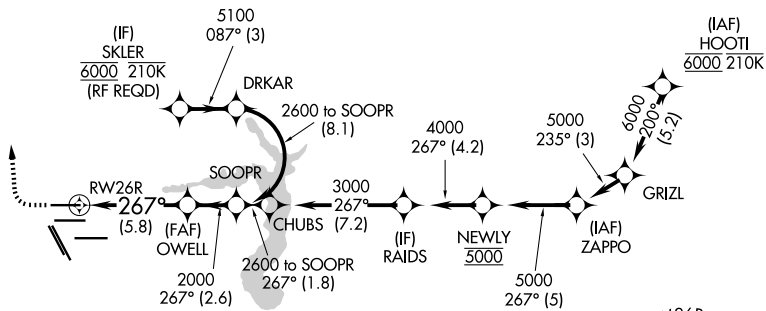
HOUSTON TOWER
120.725 290.2

GND CON
118.575

GND CON
118.575



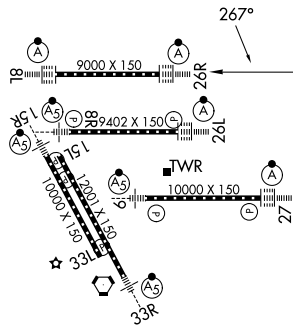
RADAR REQUIRED



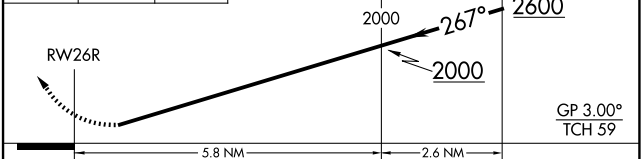
SC-5, 16 APR 2026 to 14 MAY 2026

SC-5, 16 APR 2026 to 14 MAY 2026

ELEV 96	D	TDZE 96
---------	----------	---------



600	3000	PEPBI	See planview for multiple IF locations.
↑	↷	△	



CATEGORY	A	B	C	D
RNP 0.11 DA		429/40	333 (400-¾)	
RNP 0.15 DA		496/45	400 (400-¾)	
RNP 0.30 DA		554/50	458 (500-1½)	

AUTHORIZATION REQUIRED

TDZ/CL Rwy 8R, 8L, 15R, 26R, 26L, 27 and 33L
HIRL all Rwy