

APP CRS	Rwy Ldg	<b>10000</b>
<b>267°</b>	TDZE	<b>86</b>
	Apt Elev	<b>96</b>

# RNAV (RNP) Y RWY 27

GEORGE BUSH INTCNTL/HOUSTON (IAH)

RNP AR APCH - GPS.

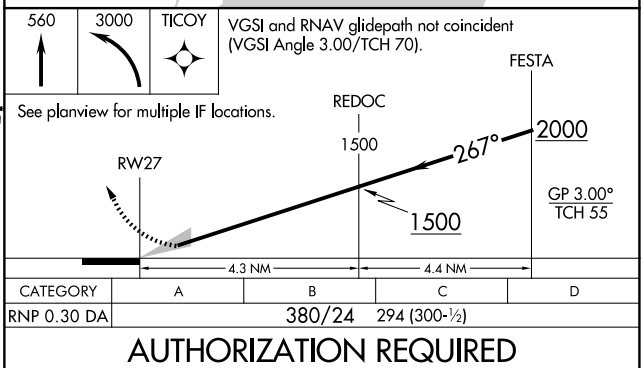
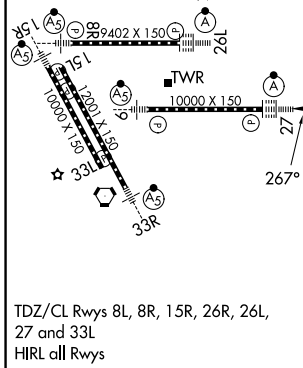
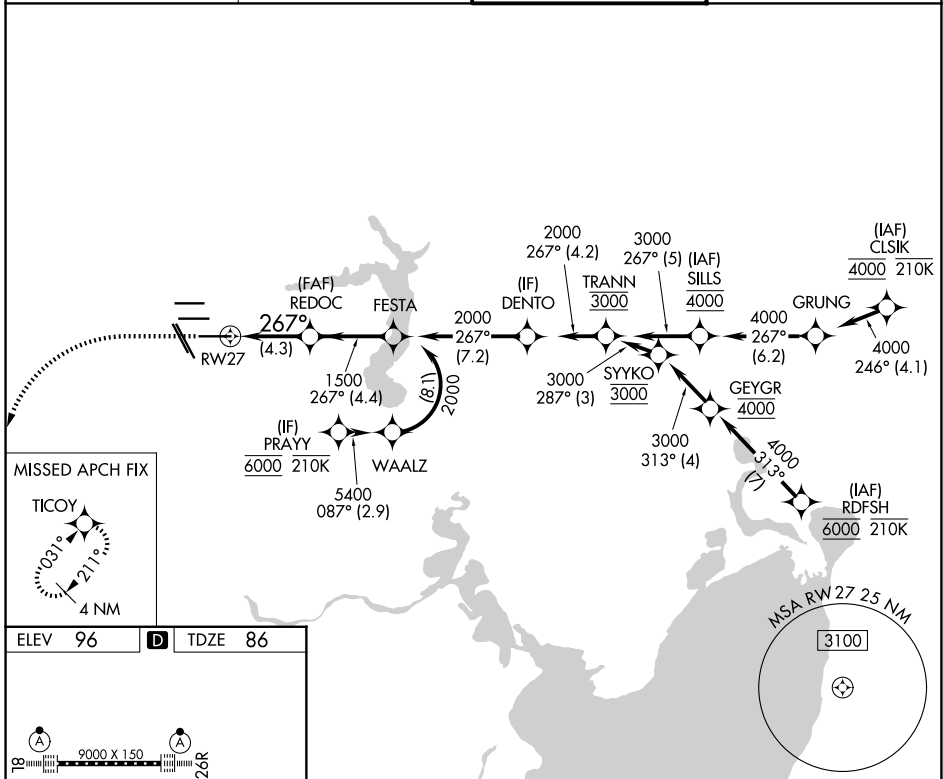
Simultaneous approach authorized. Use of FD or AP required during simultaneous operations. For uncompensated Baro-VNAV systems, procedure NA below -2°C or above 54°C. For inop ALS, increase RNP 0.30 all Cats visibility to RVR 4500.

ALSF-2



MISSED APPROACH: Climb to 560 then climbing left turn to 3000 direct TICOOY and hold.

D-ATIS <b>124.05</b>	HOUSTON APP CON <b>120.05 379.1 E</b> <b>124.35 316.15 W</b>	HOUSTON TOWER <b>135.15 290.2</b>	GND CON <b>118.575</b>
-------------------------	--	--------------------------------------	---------------------------



SC-5, 16 APR 2026 to 14 MAY 2026

SC-5, 16 APR 2026 to 14 MAY 2026