

WAAS CH 97726 W26A	APP CRS 267°	Rwy Ldg TDZE Apt Elev	9000 96 96
--	------------------------	-----------------------------	---------------------------------------

RNAV (GPS) Z RWY 26R

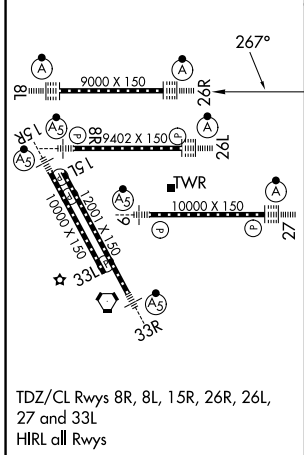
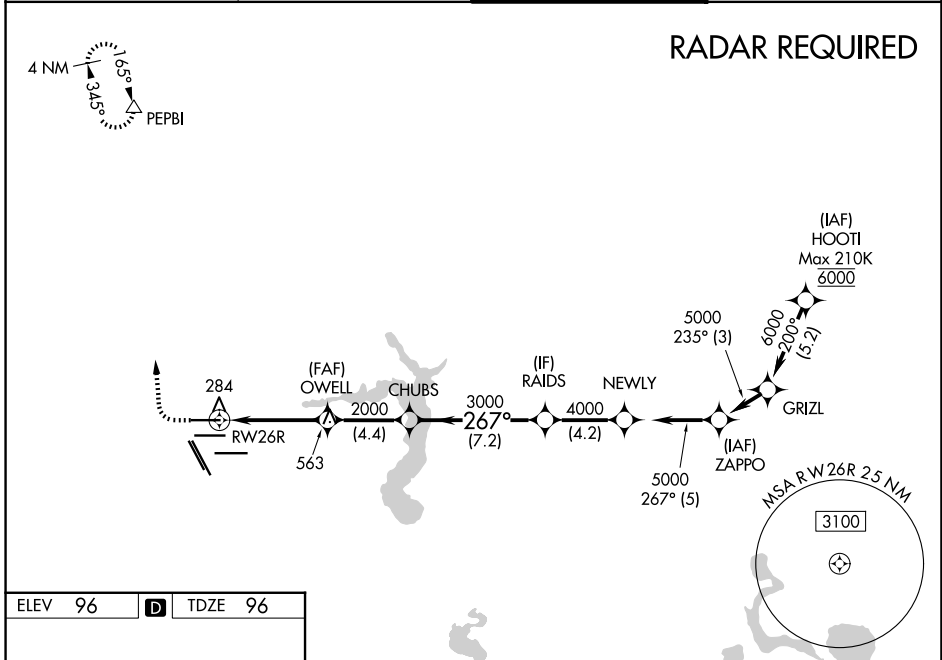
GEORGE BUSH INTCNTL/HOUSTON (IAH)

▼ For uncompensated Baro-VNAV systems, LNAV/VNAV NA below -3°C (27°F) or above 54°C (130°F). For inop ALSF, increase LPV Cat E visibility to RVR 4000, LNAV/VNAV all Cats visibility to 1¼, and LNAV Cat C/D/E visibility to 1¾. DME/DME RNP-0.3 NA. Simultaneous approach authorized with Rwy 26L and Rwy 27. LNAV procedure NA during simultaneous operations. Use of FD or AP providing RNAV track guidance required during simultaneous operations.

ALSF-2

MISSED APPROACH: Climb to 600 then climbing right turn to 3000 direct PEPBI and hold.

D-ATIS 124.05	HOUSTON APP CON 120.05 379.1 E 124.35 316.15 W	HOUSTON TOWER 120.725 290.2	GND CON 118.575
-------------------------	--	---------------------------------------	---------------------------



	600	3000	PEPBI					
	↑	↷	△					
	*NAV only							
	1.4	4.4	4.4	7.2	4.2	5		
CATEGORY	A	B	C	D	E			
LPV DA		296/18	200 (200-½)					
LNAV/VNAV DA		496/42	400 (400-¾)					
LNAV MDA	600/24	504 (600-½)		600/55	504 (600-1)			