

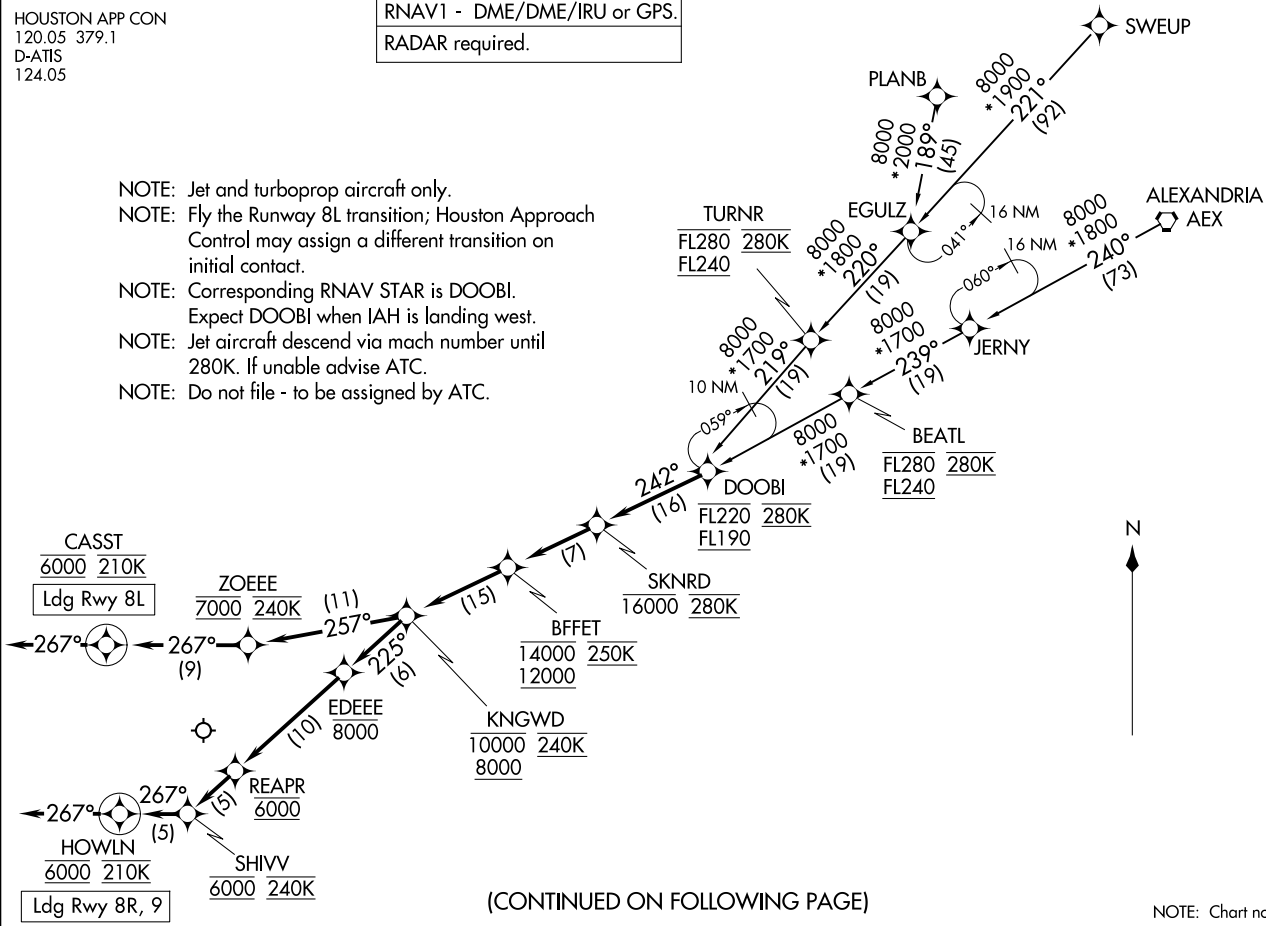
SKNRD FIVE ARRIVAL (RNAV)  
(DOOBI, SKNRD5) 12JUN25

GEORGE BUSH INTCNL/HOUSTON (IAH)  
HOUSTON, TEXAS

HOUSTON APP CON  
120.05 379.1  
D-ATIS  
124.05

RNAV1 - DME/DME/IRU or GPS.  
RADAR required.

- NOTE: Jet and turboprop aircraft only.
- NOTE: Fly the Runway 8L transition; Houston Approach Control may assign a different transition on initial contact.
- NOTE: Corresponding RNAV STAR is DOOBI. Expect DOOBI when IAH is landing west.
- NOTE: Jet aircraft descend via mach number until 280K. If unable advise ATC.
- NOTE: Do not file - to be assigned by ATC.



(CONTINUED ON FOLLOWING PAGE)

NOTE: Chart not to scale.

(DOOBI, SKNRD5) 25163  
SKNRD FIVE ARRIVAL (RNAV)

AL-5461 (FAA)  
GEORGE BUSH INTCNL/HOUSTON (IAH)  
HOUSTON, TEXAS

ARRIVAL ROUTE DESCRIPTION

ALEXANDRIA TRANSITION (AEX.SKNRD5)

PLANB TRANSITION (PLANB.SKNRD5)

SWEUP TRANSITION (SWEUP.SKNRD5)

From DOOBI on track 242° to cross SKNRD at or below 16000 and at 280K.

LANDING RUNWAY 8L: From SKNRD on track 242° to cross BFFET between 12000 and 14000 and at 250K, then on track 242° to cross KINGWD at between 8000 and 10000 and at 240K, then on track 257° to cross ZOEEE at 7000 and at 240K, then on track 267° to cross CASST at 6000 and at 210K, then on track 267°. Expect RADAR vectors to final approach course.

LANDING RUNWAYS 8R, 9: From SKNRD on track 242° to cross BFFET between 12000 and 14000 and at 250K, then on track 242° to cross KINGWD between 8000 and 10000 and at 240K, then on track 225° to cross EDEEE at or below 8000, then on track 225° to cross REAPR at 6000, then on track 225° to cross SHIVV at 6000 and at 240K, then on track 267° to cross HOWLN at 6000 and at 210K, then on track 267°. Expect RADAR vectors to final approach course.

SC-5, 16 APR 2026 to 14 MAY 2026

SC-5, 16 APR 2026 to 14 MAY 2026