


LOC I-HUV 109.55	APP CRS 019°	Rwy Ldg 6506
		TDZE 300
		Apt Elev 303

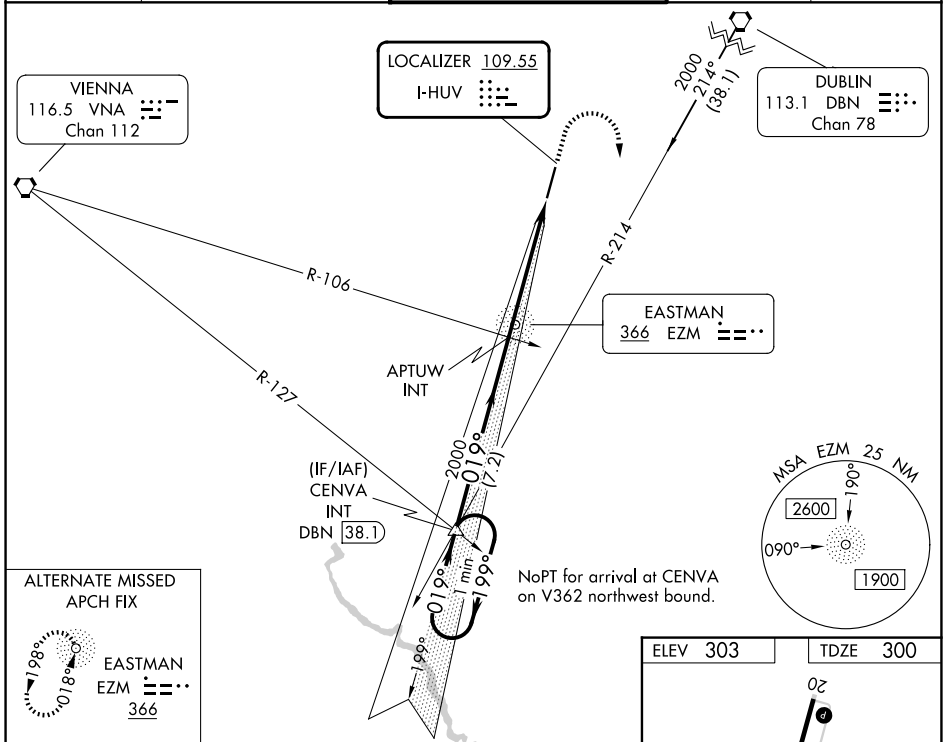
ILS or LOC RWY 2

HEART OF GEORGIA RGNL (E2M)

⚠ When local altimeter setting not received, use Dublin altimeter setting and increase all DA 52 feet and all MDA 60 feet; increase S-LOC 2 Cat C/D and Circling Cat C visibility ¼ mile.

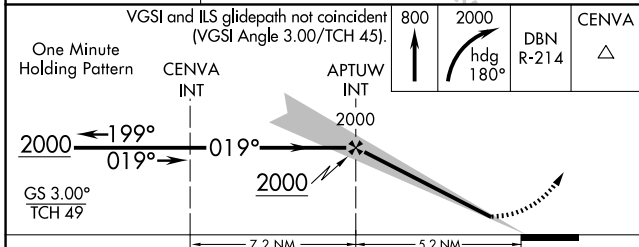
MALSR  MISSED APPROACH: Climb to 800 then climbing right turn to 2000 on heading 180° and DBN VORTAC R-214 to CENVA INT and hold.

ATIS 119.425	JACKSONVILLE CENTER 127.575 269.025	HEART OF GEORGIA TOWER ★ 124.55 (CTAF) 0	GND CON 121.175	UNICOM 122.95
------------------------	---	--	---------------------------	-------------------------



ALTERNATE MISSED APCH FIX

EASTMAN E2M 366



ELEV 303	TDZE 300
----------	----------

HIRL Rwy 2-20
REIL Rwy 20

FAF to MAP 5.2 NM					
Knots	60	90	120	150	180
Min:Sec	5:12	3:28	2:36	2:05	1:44

CATEGORY	A	B	C	D
S-ILS 2		500-½	200 (200-½)	
S-LOC 2	820-½	520 (600-½)	820-1	520 (600-1)
CIRCLING	820-1	517 (600-1)	900-1½ 597 (600-1½)	900-2 597 (600-2)

SE-4, 16 APR 2026 to 14 MAY 2026

SE-4, 16 APR 2026 to 14 MAY 2026