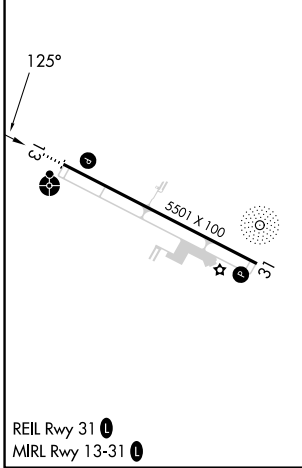
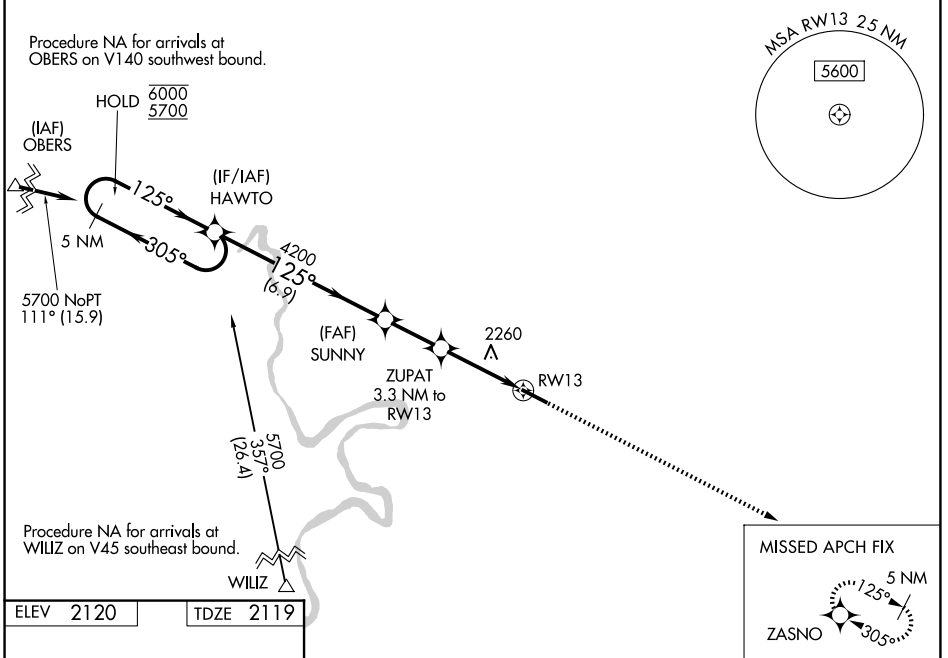


WAAS CH 86712 W13A	APP CRS 125°	Rwy Ldg TDZE 5501 2119	Apt Elev 2120
--	------------------------	--	-------------------------

RNAV (GPS) RWY 13

VIRGINIA TECH/MONTGOMERY EXEC (BCB)

<p>RNP APCH.</p> <p>⚠ Rwy 13 helicopter visibility reduction below 1 SM NA. For uncompensated Baro-VNAV systems, LNAV/VNAV NA below -19°C or above 54°C. Inop table does not apply to LPV all Cats, LNAV/VNAV all Cats, and LNAV Cats A and B.</p>	<p>ODALS</p>	<p>MISSED APPROACH: Climb to 5400 direct ZASNO and hold, continue climb-in-hold to 5400.</p>	
<p>AWOS-3 133.325</p>	<p>ROANOKE APP CON 133.225 339.8</p>	<p>CLNC DEL 124.85</p>	<p>UNICOM 123.05 (CTAF) 0</p>



	5400	ZASNO			
5 NM Holding Pattern HAWTO	SUNNY	ZUPAT 3.3 NM to RW13	RW13	*LNAV only	
6000 ← 305°	4200	*3380	*0.9 NM to RW13	RW13	
5700 125° →	4200	2.2 NM	2.4	0.9	
GP 3.44° TCH 55	6.9 NM	2.2 NM	2.4	0.9	
CATEGORY	A	B	C	D	
LPV DA	2389-1	270 (300-1)			NA
LNAV/VNAV DA	2419-1	300 (300-1)			NA
LNAV MDA	2520-1	401 (400-1)			NA
CIRCLING	2760-1 640 (700-1)	2820-1 700 (700-1)	2980-2½ 860 (900-2½)		NA

NE-3, 16 APR 2026 to 14 MAY 2026

NE-3, 16 APR 2026 to 14 MAY 2026