

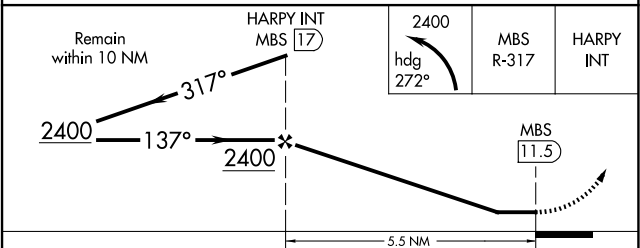
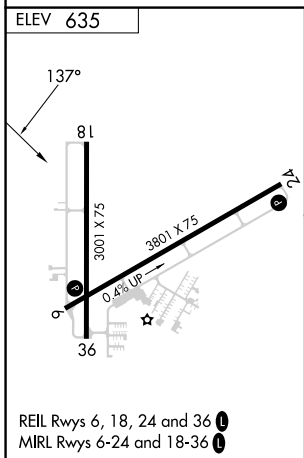
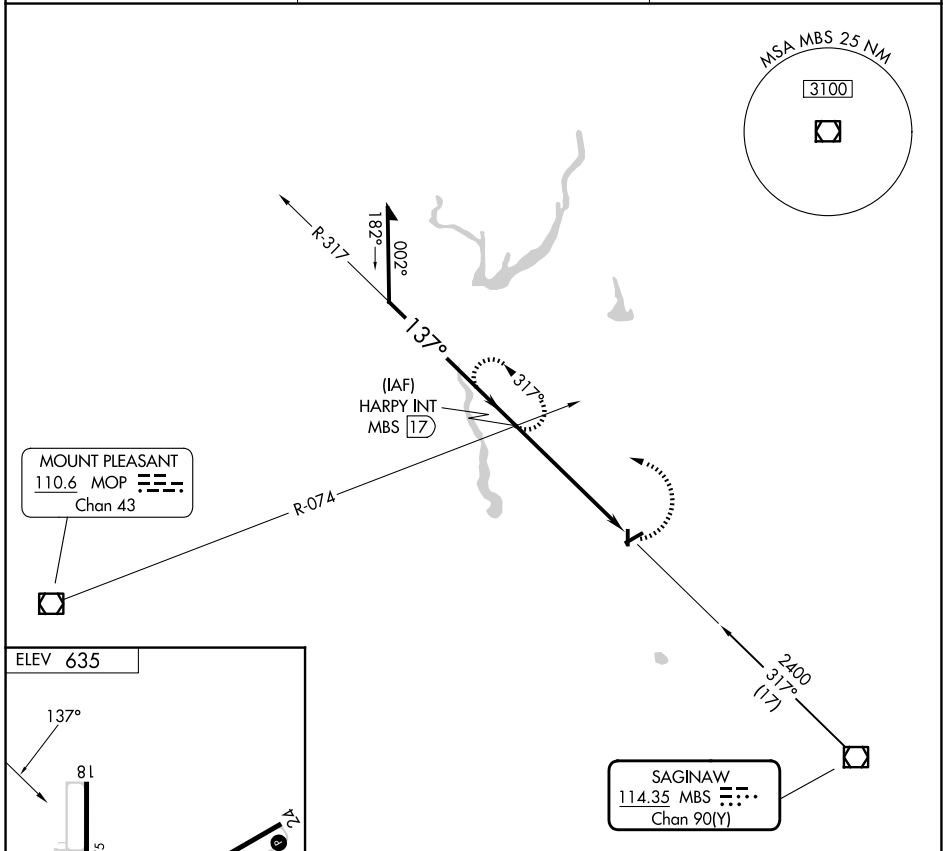
VOR/DME MBS <b>114.35</b> Chan <b>90</b> (Y)	APP CRS <b>137°</b>	Rwy Ldg TDZE Apt Elev <b>635</b>	<b>N/A</b> <b>N/A</b>
--	------------------------	--	--------------------------

**VOR-A**  
JACK BARSTOW (IKW)

**⚠** When local altimeter setting not received, use MBS Intl altimeter setting and increase all MDA 40 feet. Circling Rwy 18, 36 NA at night.  
Rwy 18, 36 helicopter visibility reduction below 1 SM NA.

MISSED APPROACH: Climbing left turn to 2400 via heading 272° and MBS VOR/DME R-317 to HARRY INT/17 DME and hold.

AWOS-3P <b>119.525</b>	GREAT LAKES APP CON ★ <b>126.45 235.625</b>	UNICOM <b>122.8</b> (CTAF) <b>📞</b>
---------------------------	--	--



FAF to MAP 5.5 NM					
Knots	60	90	120	150	180
Min:Sec	5:30	3:40	2:45	2:12	1:50
CATEGORY	A	B	C	D	
CIRCLING	1140-1	505 (600-1)	1240-1¾ 605 (700-1¾)	NA	

EC-1, 16 APR 2026 to 14 MAY 2026

EC-1, 16 APR 2026 to 14 MAY 2026