

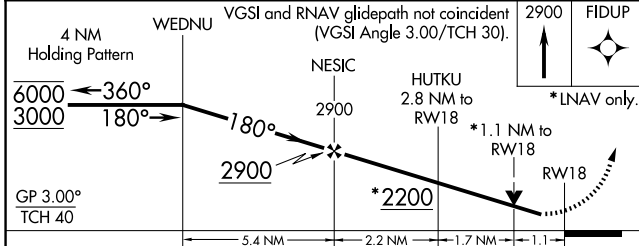
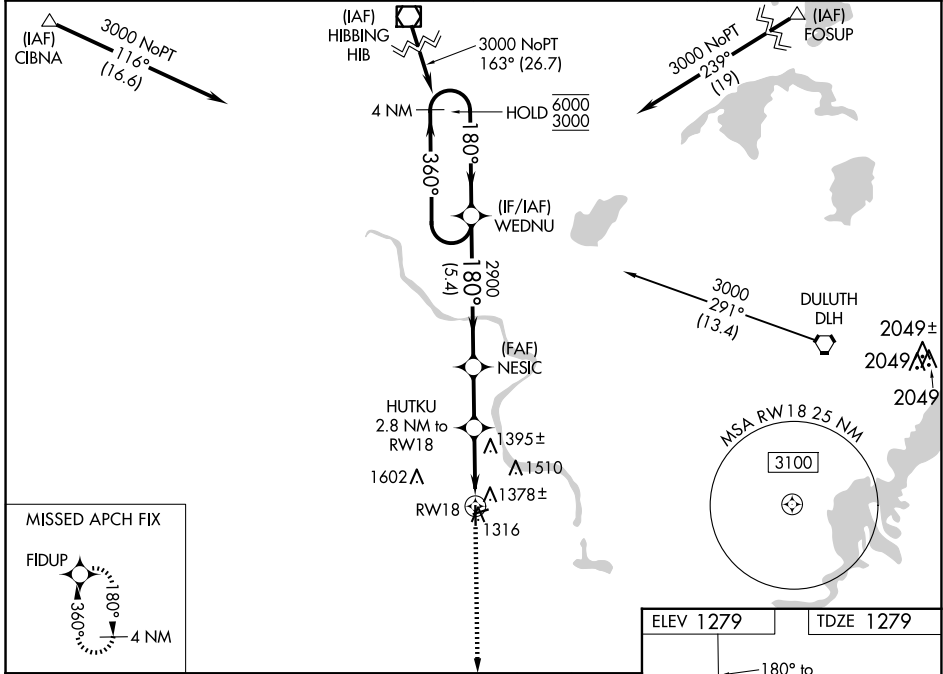
WAAS CH 97529 W18A	APP CRS 180°	Rwy Idg TDZE Apt Elev	4002 1279 1279
--	------------------------	-----------------------------	---

RNAV (GPS) RWY 18

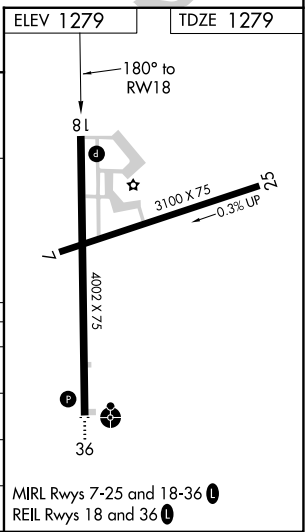
CLOQUET/CARLTON COUNTY (COQ)

RNP APCH.	MISSED APPROACH: Climb to 2900 direct FIDUP and hold.
<p>▼ Rwy 18 helicopter visibility reduction below 3/4 SM NA. For uncompensated Baro-VNAV systems, LNAV/VNAV NA below -17°C or above 54°C. Circling Rwy 7, 25 NA at night.</p>	

AWOS-3 118.525	DULUTH APP CON 125.45 233.7	CLNC DEL 122.15	UNICOM 122.8 (CTAF) 1
--------------------------	---------------------------------------	---------------------------	--



CATEGORY	A	B	C	D
LPV DA	1557-1 278 (300-1)			NA
LNAV/VNAV DA	1539-1 260 (300-1)			NA
LNAV MDA	1660-1 381 (400-1)		1660-1 381 (400-1 1/8)	NA
CIRCLING	1740-1 461 (500-1)	1860-1 581 (600-1)	1920-1 641 (700-1 3/4)	NA



NC-1, 16 APR 2026 to 14 MAY 2026

NC-1, 16 APR 2026 to 14 MAY 2026