

WAAS CH 90534 W18A	APP CRS 182°	Rwy Ldg 4799 TDZE 675 Apt Elev 686
--	------------------------	---

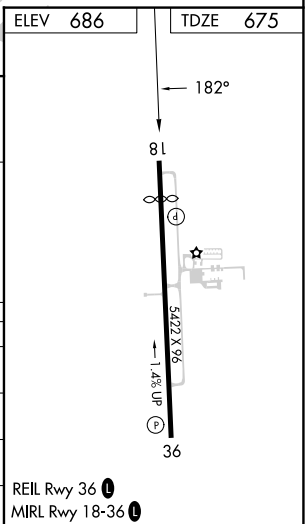
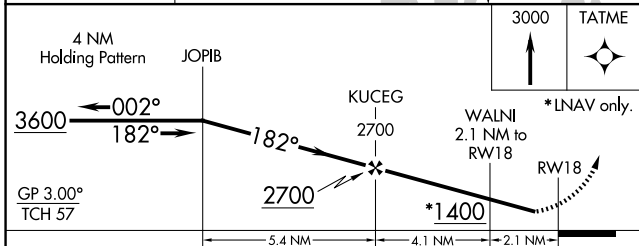
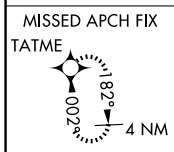
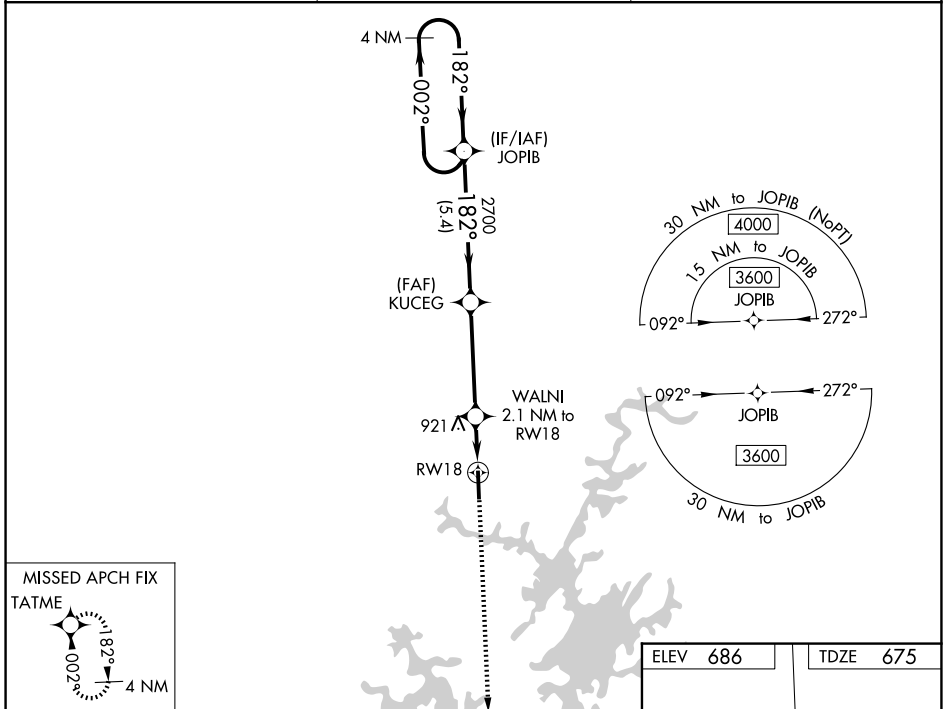
RNAV (GPS) RWY 18

THOMAS C RUSSELL FLD (ALX)

⚠ For uncompensated Baro-VNAV systems, LNAV/VNAV NA below -16°C (4°F) or above 54°C (130°F). Rwy 18 helicopter visibility reduction below 1 SM NA. DME/DME RNP-0.3 NA.

MISSED APPROACH: Climb to 3000 direct TATME and hold.

AWOS-3PT 118.325	MONTGOMERY APP CON * 121.2 269.05	UNICOM 122.7 (CTAF) ①
----------------------------	---	---------------------------------



CATEGORY	A	B	C	D
LPV DA		1061-1¼	386 (400-1¼)	
LNAV/VNAV DA		1214-1¾	539 (600-1¾)	
LNAV MDA	1160-1	485 (500-1)	1160-1¾	485 (500-1½)
CIRCLING	1180-1 494 (500-1)	1240-1 554 (600-1)	1540-2½ 854 (900-2½)	1540-2¾ 854 (900-2¾)

SE-4, 16 APR 2026 to 14 MAY 2026

SE-4, 16 APR 2026 to 14 MAY 2026