

WAAS CH <b>57913</b> <b>W33A</b>	APP CRS <b>330°</b>	Rwy Ldg TDZE <b>831</b> Apt Elev <b>833</b>
--	------------------------	---


# RNAV (GPS) RWY 33

LAWRENCE RGNL (LWC)

RNP APCH - GPS.

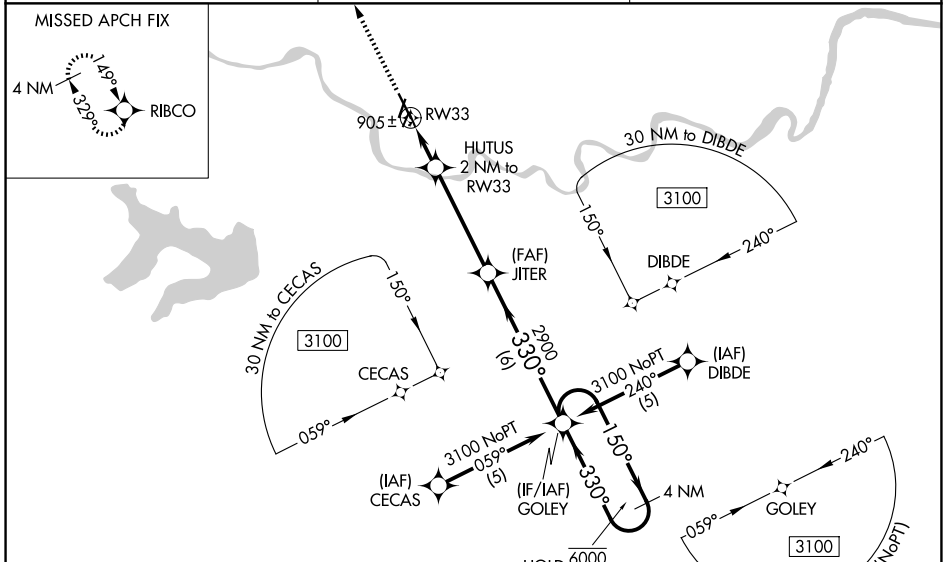
⚠ For uncompensated Baro-VNAV systems, LNAV/VNAV NA below -16°C or above 54°C. Baro-VNAV and VDP NA when using TOP altimeter setting. When local altimeter setting not received, use TOP altimeter setting and increase LPV DA to 1083 feet, increase LNAV/VNAV DA to 1252 feet and all visibilities ¼ SM; increase all MDAs 60 feet and LNAV and Circling visibility Cat C ¼ SM.

MALSRL



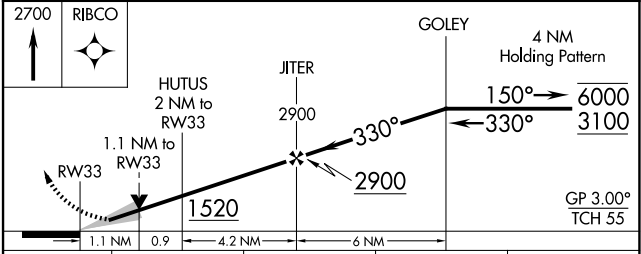
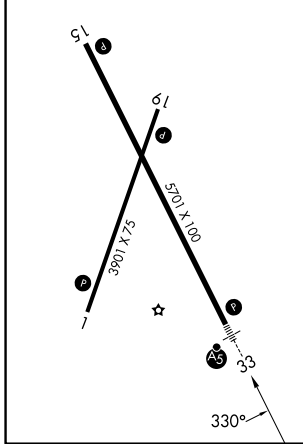
MISSED APPROACH: Climb to 2700 direct RIBCO and hold.

ASOS <b>121.225</b>	KANSAS CITY CENTER <b>123.8 343.7</b>	UNICOM <b>123.0 (CTAF) 0</b>
------------------------	--	---------------------------------



ELEV <b>833</b>	TDZE <b>831</b>
-----------------	-----------------

REIL Rwy 1, 15, and 19  
MIRL Rwy 1-19 and 15-33



CATEGORY	A	B	C	D
LPV DA	1031-¾	200 (200-¾)		NA
LNAV/VNAV DA	1200-¾	369 (400-¾)		NA
LNAV MDA	1220-¾	389 (400-¾)		NA
CIRCLING	1420-1 587 (600-1)	1480-1 647 (700-1)	1620-2¼ 787 (800-2¼)	NA

NC-2, 16 APR 2026 to 14 MAY 2026

NC-2, 16 APR 2026 to 14 MAY 2026