

WAAS CH 93618 W02A	APP CRS 017°	Rwy Ldg TDZE 372 Apt Elev 373
--	------------------------	---

RNAV (GPS) RWY 2

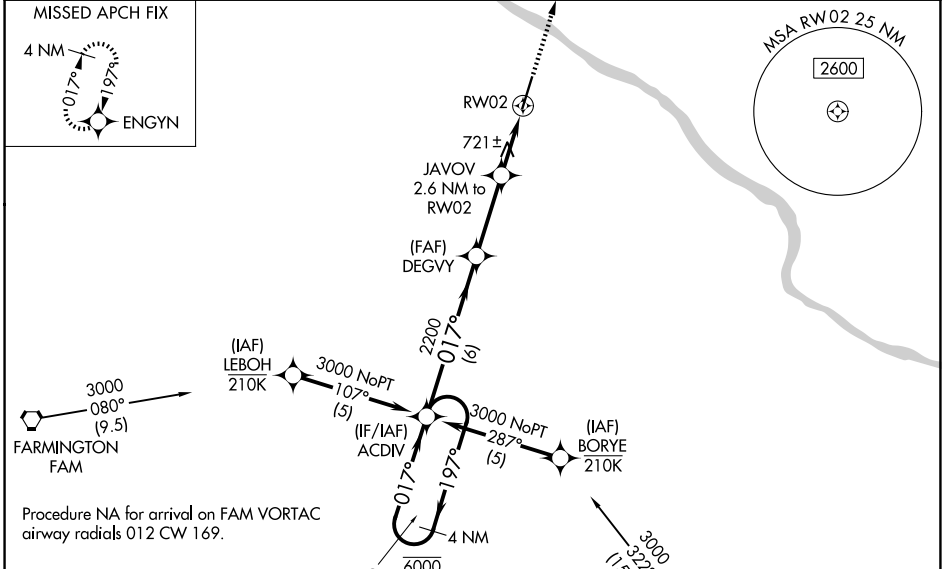
PERRYVILLE RGNL (PCD)

RNP APCH - GPS.

⚠ Rwy 2 helicopter visibility reduction below $\frac{3}{4}$ SM NA. Baro-VNAV and VDP NA when using CGI altimeter setting. For uncompensated Baro-VNAV systems, LNAV/VNAV NA below -15°C or above 54°C . When local altimeter setting not received, use CGI altimeter setting and increase LPV DA to 1223 feet and all visibility $\frac{1}{2}$ SM. Increase LNAV/VNAV DA to 1154 feet and all visibilities $\frac{1}{2}$ SM. Increase all MDAs 100 feet and LNAV visibility Cat C/D $\frac{1}{4}$ SM and Circling visibility Cat C $\frac{1}{4}$ SM.

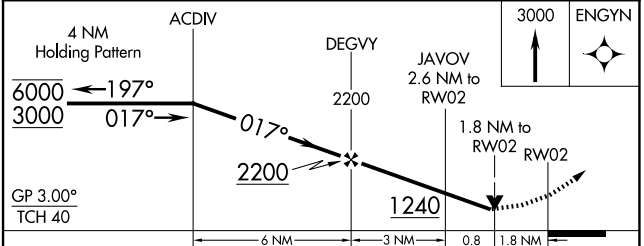
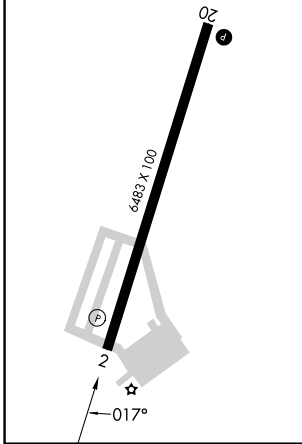
MISSED APPROACH: Climb to 3000 direct ENGYN and hold.

AWOS-3PT 118.95	KANSAS CITY CENTER 127.475 346.275	UNICOM 122.8 (CTAF) 0
---------------------------	--	---------------------------------



ELEV 373	D	TDZE 372
-----------------	----------	-----------------

REIL Rws 2 and 20 **1**
MIRL Rwy 2-20 **1**



CATEGORY	A	B	C	D
LPV DA	1123-2		751 (800-2)	
LNAV/VNAV DA	1054-2		682 (700-2)	
LNAV MDA	980-1	608 (700-1)	980-1 $\frac{3}{4}$	608 (700-1 $\frac{3}{4}$)
CIRCLING	980-1 607 (700-1)	1000-1 627 (700-1)	1260-2 $\frac{3}{4}$ 887 (900-2 $\frac{3}{4}$)	1260-3 887 (900-3)

NC-3, 16 APR 2026 to 14 MAY 2026

NC-3, 16 APR 2026 to 14 MAY 2026