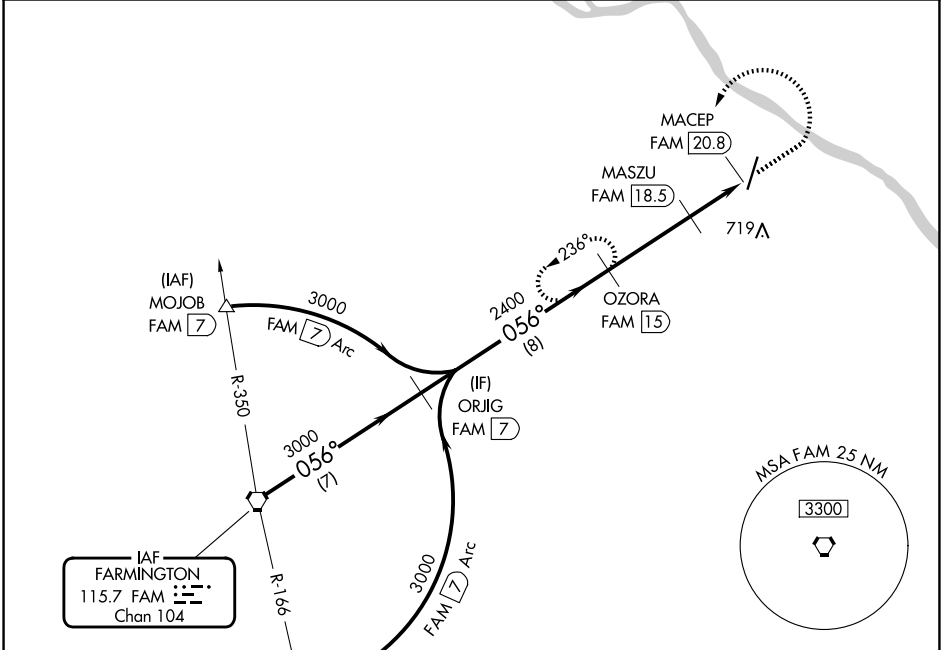


VORTAC FAM <b>115.7</b> Chan <b>104</b>	APP CRS <b>056°</b>	Rwy Ldg TDZE Apt Elev	<b>N/A</b> <b>N/A</b> <b>372</b>
---	------------------------	-----------------------------	--

**VOR-A**  
PERRYVILLE RGNL (PCD)

<b>▼</b> <b>▲</b>	DME required.	MISSED APPROACH: Climb to 1500 then climbing left turn to 2400 on FAM VORTAC R-056 to OZORA/FAM 1.5 DME and hold.
----------------------	---------------	---

AWOS-3PT <b>118.95</b>	KANSAS CITY CENTER <b>127.475 346.275</b>	UNICOM <b>122.8</b> (CTAF) <b>①</b>
---------------------------	--	--

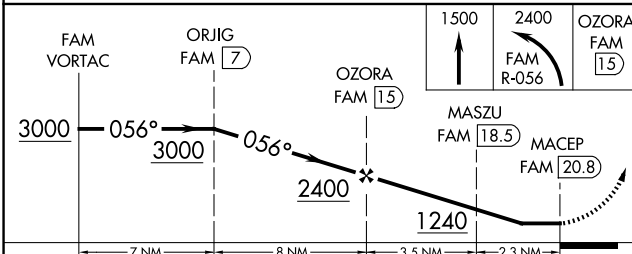
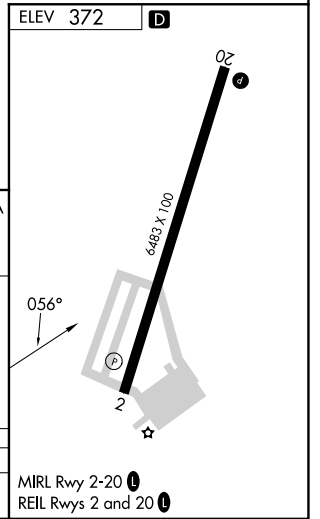


NC-3, 16 APR 2026 to 14 MAY 2026

NC-3, 16 APR 2026 to 14 MAY 2026

IAF FARMINGTON  
115.7 FAM  
Chan 104

Procedure NA for arrival at FAM VORTAC on airway radials 012 CW 114.



CATEGORY	A	B	C	D
CIRCLING	1040-1	668 (700-1)	1260-2 <sup>3</sup> / <sub>4</sub> 888 (900-2 <sup>3</sup> / <sub>4</sub> )	1260-3 888 (900-3)