

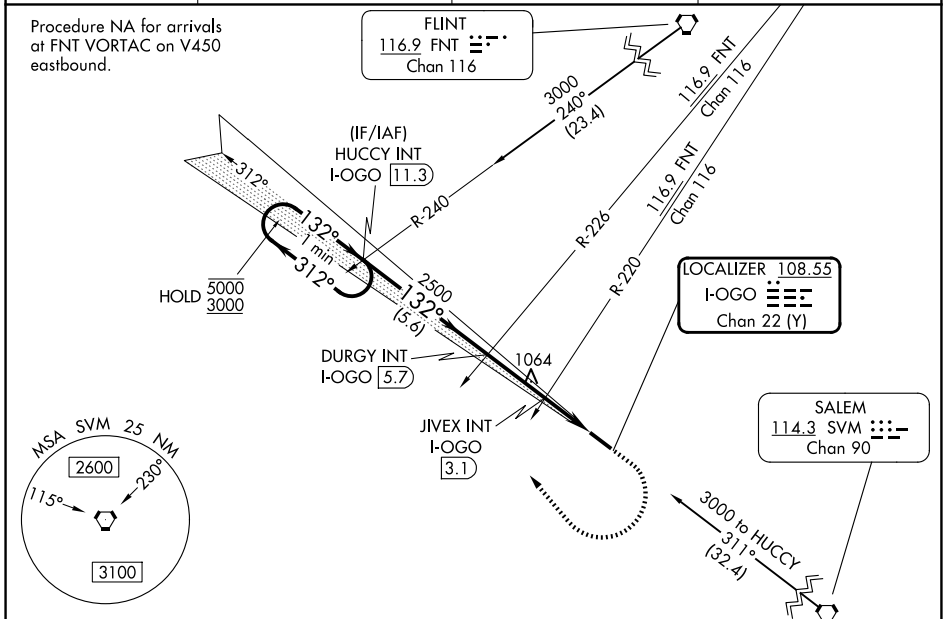
LOC/DME I-OGO 108.55 Chan 22 (Y)	APP CRS 132°	Rwy Ldg 5002 TDZE 962 Apt Elev 962
--	------------------------	---

ILS or LOC RWY 13

LIVINGSTON COUNTY/SPENCER J HARDY (OZW)

<p>▼ For inop ALS, increase LOC Cat C and D visibility to 1½ SM, and JIVEX fix minimums S-13 Cat C and D visibility to 1 SM.</p> <p>▲ NA</p>	<p>MALSRL</p>	<p>MISSED APPROACH: Climb to 1600 then climbing right turn to 3000 heading 356° and I-OGO NW course to HUCCY INT/I-OGO 11.3 DME and hold.</p>
--	---------------	---

AWOS-3P 118.875	DETROIT APP CON 132.35 284.0	CLNC DEL 121.725 (GCO)	UNICOM 123.0 (CTAF) 0
---------------------------	--	----------------------------------	---------------------------------



EC-1, 16 APR 2026 to 14 MAY 2026

EC-1, 16 APR 2026 to 14 MAY 2026

One Minute Holding Pattern	HUCCY INT I-OGO 11.3	DURGY INT I-OGO 5.7	JIVEX INT I-OGO 3.1	HUCCY INT	ELEV 962	TDZE 962																					
5000 ← 312°	3000 → 132°	2500	2500	3000																							
GS 3.00° TCH 48	132°	2500	*1540	hdg 356° I-OGO NW crs																							
	5.6 NM	2.6 NM	1.1	1.0																							
CATEGORY	A	B	C	D																							
S-ILS 13	1162-½		200 (200-½)																								
S-LOC 13	1540-½ 578 (600-½)		1540-1¼ 578 (600-1¼)																								
CIRCLING	1540-1 578 (600-1)		1600-1¾ 638 (700-1¾) 1600-2 638 (700-2)																								
JIVEX FIX MINIMUMS (DUAL VOR RECEIVERS OR DME REQUIRED)																											
S-LOC 13	1320-½ 358 (400-½)		1320-⅝ 358 (400-⅝)																								
CIRCLING	1400-1 438 (500-1) 1420-1 458 (500-1)		1600-1¾ 638 (700-1¾) 1600-2 638 (700-2)																								
<table border="1"> <tr> <td colspan="7">FAF to MAP 4.7 NM</td> </tr> <tr> <td>Knots</td> <td>60</td> <td>90</td> <td>120</td> <td>150</td> <td>180</td> <td></td> </tr> <tr> <td>Min:Sec</td> <td>4:42</td> <td>3:08</td> <td>2:21</td> <td>1:53</td> <td>1:34</td> <td></td> </tr> </table>							FAF to MAP 4.7 NM							Knots	60	90	120	150	180		Min:Sec	4:42	3:08	2:21	1:53	1:34	
FAF to MAP 4.7 NM																											
Knots	60	90	120	150	180																						
Min:Sec	4:42	3:08	2:21	1:53	1:34																						