

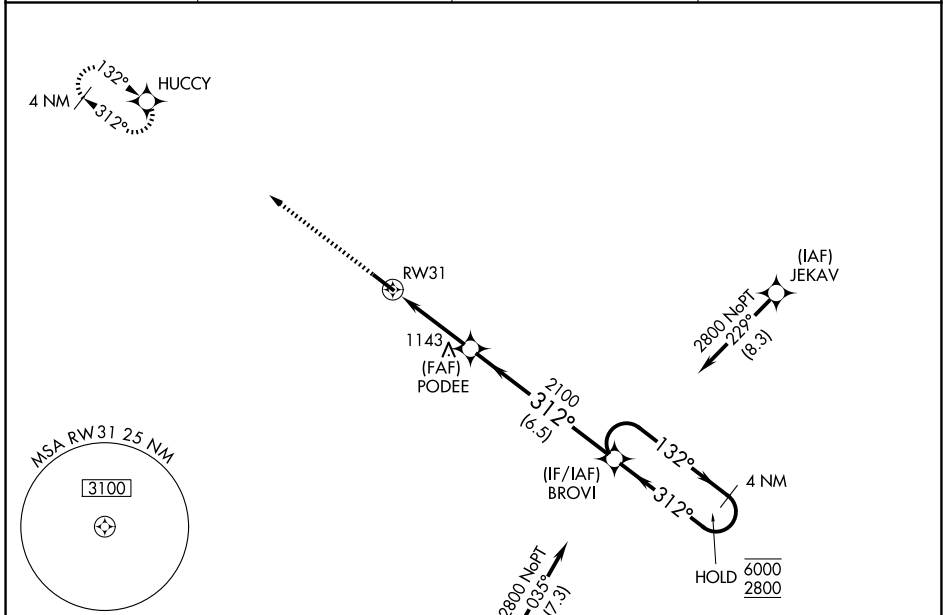
WAAS CH 99722 W31A	APP CRS 312°	Rwy Ldg 5002 TDZE 943 Apt Elev 962
--	------------------------	---

RNAV (GPS) RWY 31

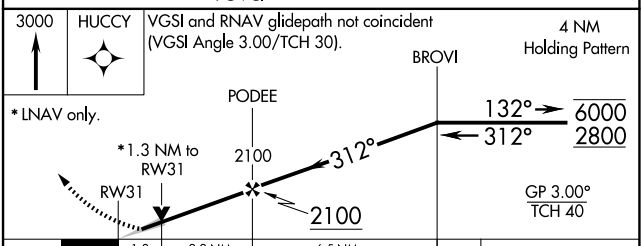
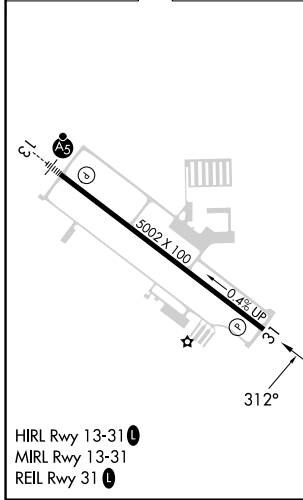
LIVINGSTON COUNTY/SPENCER J HARDY (OZW)

RNP APCH.		MISSED APPROACH: Climb to 3000 direct HUCCY and hold.	
<p>⚠ For uncompensated Baro-VNAV systems, LNAV/VNAV NA below -16°C or above 54°C.</p>			

AWOS-3P 118.875	DETROIT APP CON 132.35 284.0	CLNC DEL 121.725 (GCO)	UNICOM 123.0 (CTAF) 0
---------------------------	--	----------------------------------	---------------------------------



ELEV 962	TDZE 943
----------	----------



CATEGORY	A	B	C	D
LPV DA	1143- ³ / ₄		200 (200- ³ / ₄)	
LNAV/VNAV DA	1410-1 ⁵ / ₈		467 (500-1 ⁵ / ₈)	
LNAV MDA	1400-1	457 (500-1)	1400-1 ³ / ₈	457 (500-1 ³ / ₈)
CIRCLING	1400-1 438 (500-1)	1420-1 458 (500-1)	1600-1 ³ / ₄ 638 (700-1 ³ / ₄)	1600-2 638 (700-2)

EC-1, 16 APR 2026 to 14 MAY 2026

EC-1, 16 APR 2026 to 14 MAY 2026