

WAAS CH 82606 W36A	APP CRS 005°	Rwy Ldg 12600 TDZE 616 Apt Elev 629
--	------------------------	--

RNAV (GPS) RWY 36L

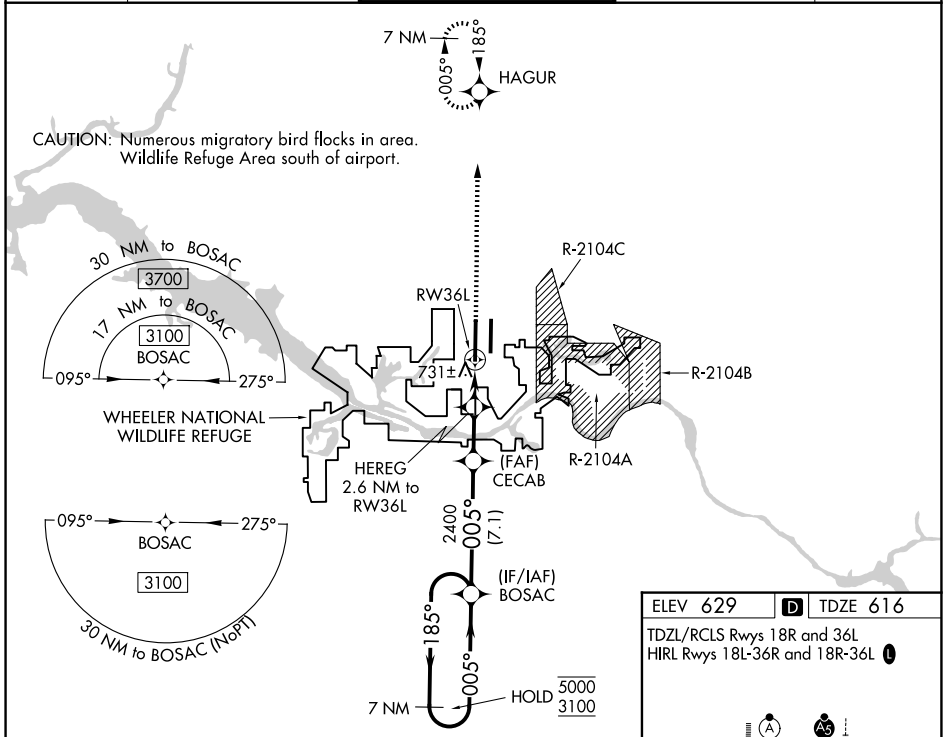
HUNTSVILLE INTL-CARL T JONES FLD (HSV)

RNP APCH-GPS.

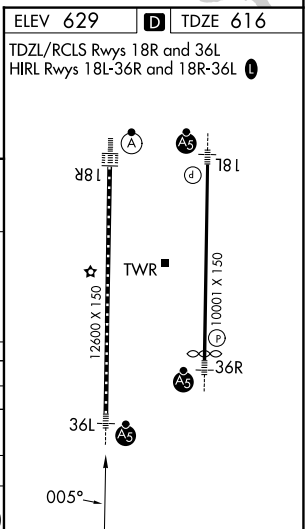
ASR Circling NA for Cats C/D/E east of Rwy 18L-36R. Simultaneous approach authorized. LNAV procedure NA during simultaneous operations. Use of FD or AP required during simultaneous operations. For uncompensated Baro-VNAV systems, LNAV/VNAV NA below -8°C or above 54°C. For inop ALS, increase LPV Cat E visibility to RVR 4000, LNAV/VNAV all Cats visibility to RVR 4500, and LNAV Cat E visibility to RVR 6000.

MALSR MISSED APPROACH: Climb to 3000 direct HAGUR and hold.

ATIS 121.25	HUNTSVILLE APP CON* 125.6 354.1	HUNTSVILLE TOWER* 127.6 (CTAF) 350.35	GND CON 121.9 269.525	UNICOM 122.95
-----------------------	---	---	---------------------------------	-------------------------



7 NM Holding Pattern	BOSAC	CECAB	HEREG	3000	HAGUR
5000 ← 185°		2400	2.6 NM to RW36L	↑	✧
3100 → 005°		1480	1.1 NM to RW36L		
GP 3.00°					
TCH 53					
CATEGORY	A	B	C	D	E
LPV DA		816/18	200 (200-½)		
LNAV/VNAV DA		892/24	276 (300-½)		
LNAV MDA	1000/24	384 (400-½)	1000/35	384 (400-¾)	
CIRCLING	1160-1	531 (600-1)	1160-1½ 531 (600-1½)	1240-2 611 (700-2)	1260-2¼ 631 (700-2¼)



SE-4, 16 APR 2026 to 14 MAY 2026

SE-4, 16 APR 2026 to 14 MAY 2026