

|  |                        |                             |   |
|--|------------------------|-----------------------------|---|
| WAAS<br>CH <b>99436</b><br><b>W35A</b> | APP CRS<br><b>354°</b> | Rwy Ldg<br>TDZE<br>Apt Elev | <b>5506</b><br><b>1155</b><br><b>1160</b> |
|--|------------------------|-----------------------------|---|

# RNAV (GPS) RWY 35

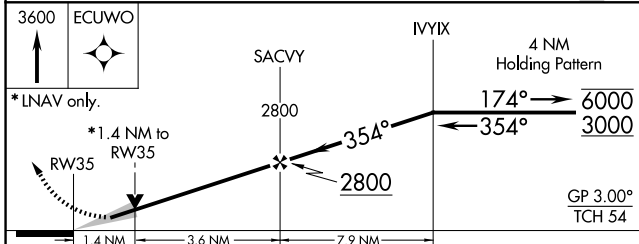
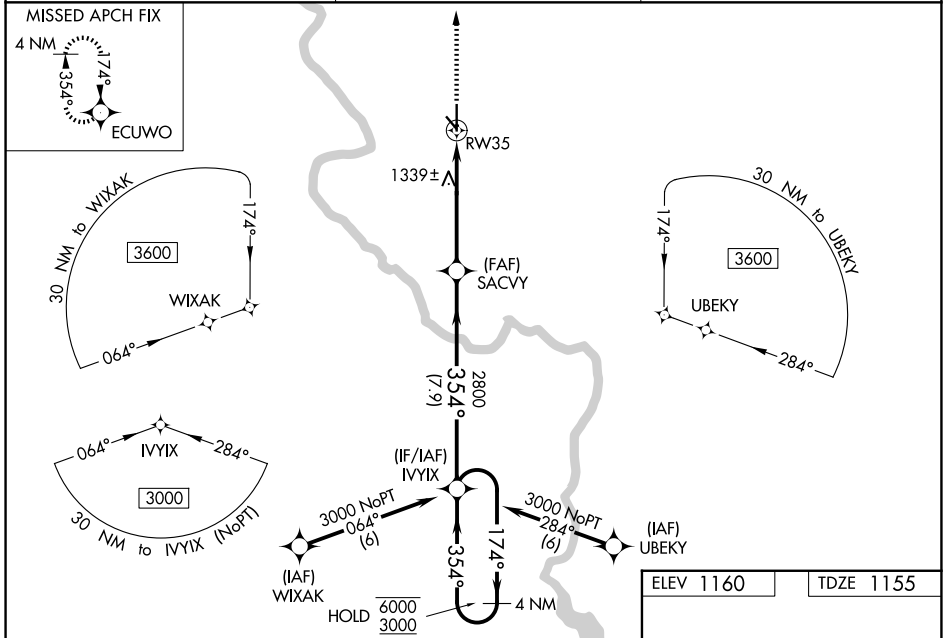
STROTHER FLD (WLD)

RNP APCH.

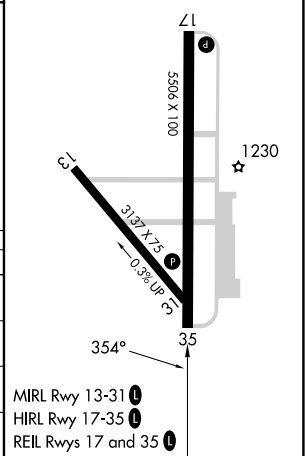
**⚠** Baro-VNAV and VDP NA when using Wichita Dwight D Eisenhower NH altimeter setting.  
**⚠** For uncompensated Baro-VNAV systems, LNAV/VNAV NA below -15°C or above 54°C.  
 When local altimeter setting not received, use Wichita Dwight D Eisenhower NH altimeter setting: increase LPV DA to 1509 feet and all visibilities ¼ SM; increase LNAV/VNAV DA to 1557 feet and all visibilities ¼ SM; increase all MDA 120 feet, LNAV Cat C visibility ⅓ SM and Circling Cat C visibility ¼ SM.

MISSED APPROACH:  
Climb to 3600 direct ECUWO and hold.

|                        |  |                               |
|------------------------|--|-------------------------------|
| ASOS<br><b>118.025</b> | KANSAS CITY CENTER<br><b>127.8 319.1</b> | UNICOM<br><b>122.8 (CTAF)</b> |
|------------------------|--|-------------------------------|



|           |           |
|-----------|-----------|
| ELEV 1160 | TDZE 1155 |
|-----------|-----------|



| CATEGORY     | A      | B           | C                       | D  |
|--------------|--------|-------------|-------------------------|----|
| LPV DA       | 1405-¾ | 250 (300-¾) |                         | NA |
| LNAV/VNAV DA | 1453-1 | 298 (300-1) |                         | NA |
| LNAV MDA     | 1640-1 | 485 (500-1) | 1640-1⅓<br>485 (500-1⅓) | NA |
| CIRCLING     | 1680-1 | 520 (600-1) | 1680-1½<br>520 (600-1½) | NA |

NC-2, 16 APR 2026 to 14 MAY 2026

NC-2, 16 APR 2026 to 14 MAY 2026