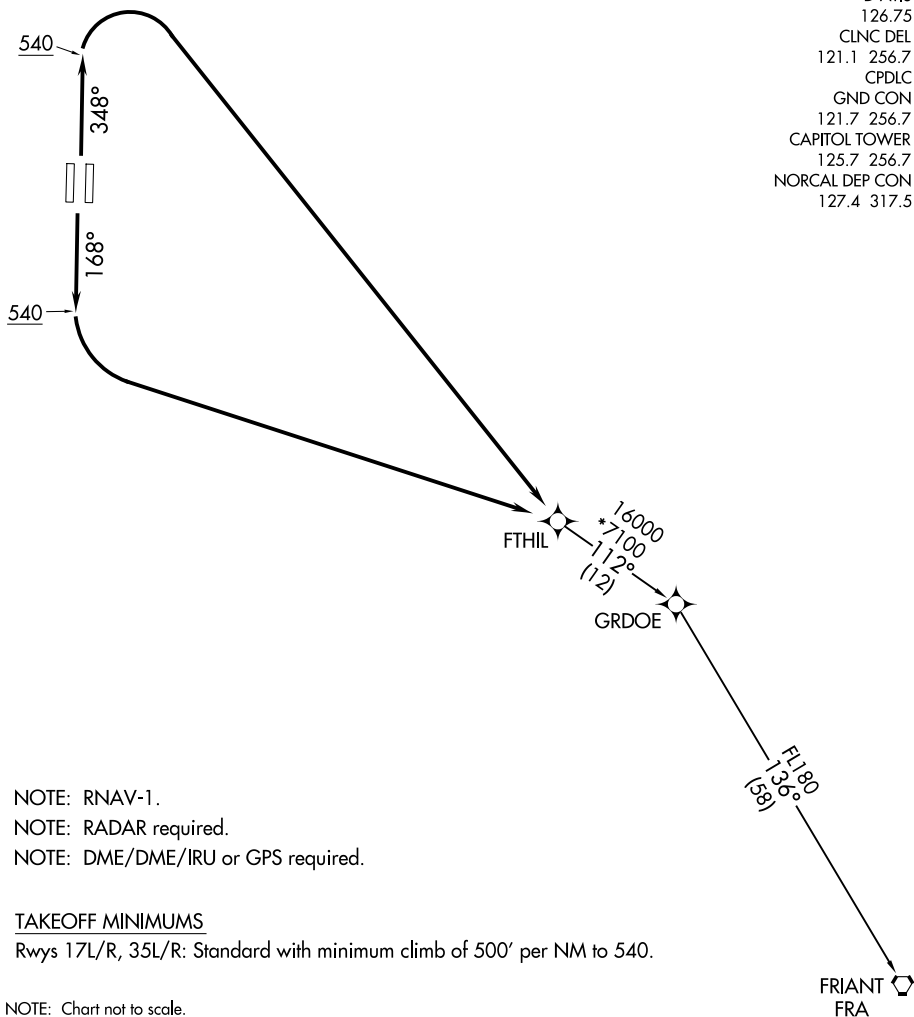


D-ATIS  
126.75  
CLNC DEL  
121.1 256.7  
CPDLC  
GND CON  
121.7 256.7  
CAPITOL TOWER  
125.7 256.7  
NORCAL DEP CON  
127.4 317.5



NOTE: RNAV-1.  
NOTE: RADAR required.  
NOTE: DME/DME/IRU or GPS required.

TAKEOFF MINIMUMS

Rwys 17L/R, 35L/R: Standard with minimum climb of 500' per NM to 540.

NOTE: Chart not to scale.



DEPARTURE ROUTE DESCRIPTION

TAKEOFF RUNWAYS 17L/R: Climb on heading 168° to 540, then left turn direct FTHIL. Thence. . .

TAKEOFF RUNWAYS 35L/R: Climb on heading 348° to 540, then right turn direct FTHIL. Thence. . .

. . . on transition. Maintain FL190. Expect filed altitude 10 minutes after departure.

FRIANT TRANSITION (FTHIL3.FRA)