

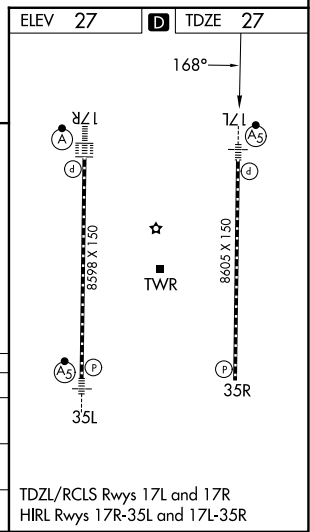
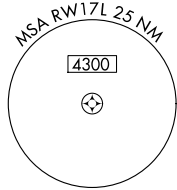
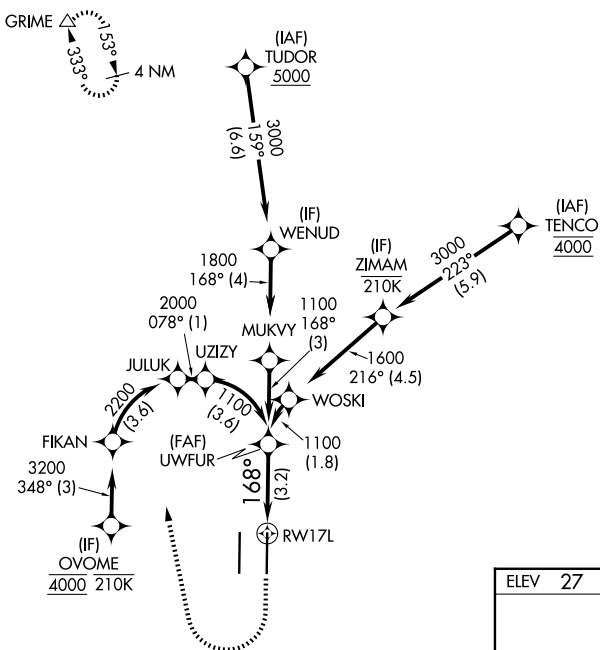
APP CRS	Rwy Ldg	8605
168°	TDZE	27
	Apt Elev	27

RNAV (RNP) Z RWY 17L

SACRAMENTO INTL (SMF)

RNP AR APCH-GPS.	MALS R	MISSED APPROACH: Climb to 500 then right turn to 3000 direct GRIME and hold. * Missed approach requires minimum climb of 290 feet per NM to 3000. # Missed approach requires minimum climb of 300 feet per NM to 3000.
▼ For uncompensated Baro-VNAV systems, procedure NA below -2°C or above 54°C. For inop ALS, increase RNP 0.12 all Cats visibility to RVR 4000; increase RNP 0.30 all Cats visibility to RVR 4500.		

D-ATIS	NORCAL APP CON	CAPITOL TOWER	GND CON
126.75	125.4 259.1 (W-NE) 125.25 257.9 (SW) 127.4 317.5 (E-SE)	125.7 256.7	121.7 256.7



500	3000	GRIME	VGSI and RNAV glidepath not coincident (VGSI Angle 3.00/TCH 64).
UWFUR 1100			
RWY 17L 168°			
See planview for multiple IF locations.			
GP 3.00° TCH 55			
3.2 NM			
CATEGORY	A	B	C
RNP 0.12 DA#		277/24	250 (300-1/2)
RNP 0.30 DA*		339/24	312 (400-1/2)
AUTHORIZATION REQUIRED			

TDZL/RCLS Rwy 17L and 17R
HIRL Rwy 17R-35L and 17L-35R

SW-2, 16 APR 2026 to 14 MAY 2026

SW-2, 16 APR 2026 to 14 MAY 2026