

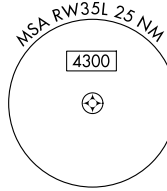
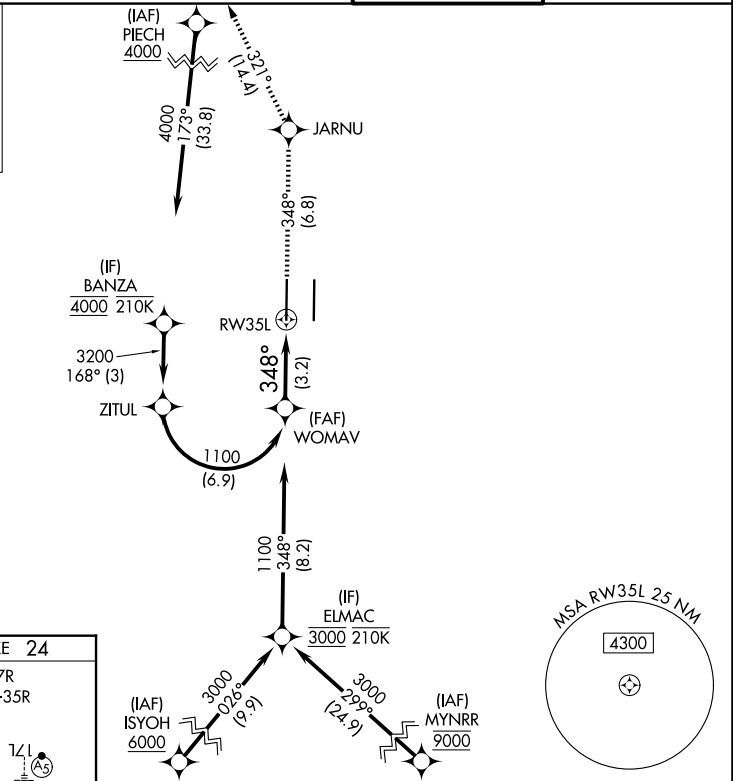
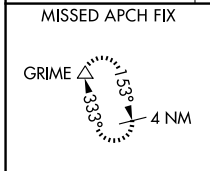
APP CRS	Rwy Ldg	8598
348°	TDZE	24
	Apt Elev	27

RNAV (RNP) Z RWY 35L

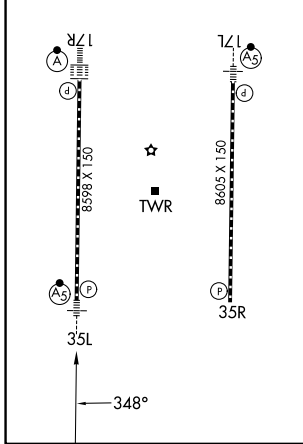
SACRAMENTO INTL (SMF)

RNP AR APCH-GPS.	MALSR	MISSED APPROACH: Climb to 2000 on track 348° to JARNU and track 321° to GRIME and hold.
<p>▼ For uncompensated Baro-VNAV systems, procedure NA below -2°C or above 54°C. For inop ALS, increase RNP 0.12 all Cats visibility to RVR 4500; increase RNP 0.30 all Cats visibility to RVR 5500.</p>		

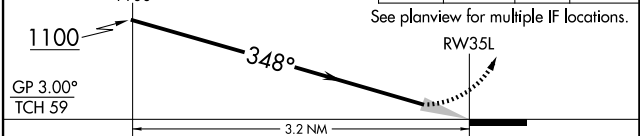
D-ATIS	NORCAL APP CON	CAPITOL TOWER	GND CON
126.75	125.4 259.1 (W-NE) 125.25 257.9 (SW) 127.4 317.5 (E-SE)	125.7 256.7	121.7 256.7



ELEV 27	D	TDZE 24
TDZL/RCLS Rwy's 17L and 17R		
HIRL Rwy's 17R-35L and 17L-35R		



<p>VGSI and RNAV glidepath not coincident (VGSI Angle 3.00/TCH 76).</p> <p>WOMAV</p> <p>1100</p>	<p>2000</p> <p>↑</p> <p>tr 348°</p>	<p>JARNU</p>	<p>GRIME</p> <p>tr 321°</p>
--	-------------------------------------	--------------	-----------------------------



GP 3.00°				
TCH 59				
CATEGORY	A	B	C	D
RNP 0.12 DA		318/24	294 (300-1/2)	
RNP 0.30 DA		382/30	358 (400-5/8)	

AUTHORIZATION REQUIRED

SW-2, 16 APR 2026 to 14 MAY 2026

SW-2, 16 APR 2026 to 14 MAY 2026