

APP CRS 348°	Rwy Ldg TDZE Apt Elev	8605 24 27
------------------------	-----------------------------	---------------------------------------

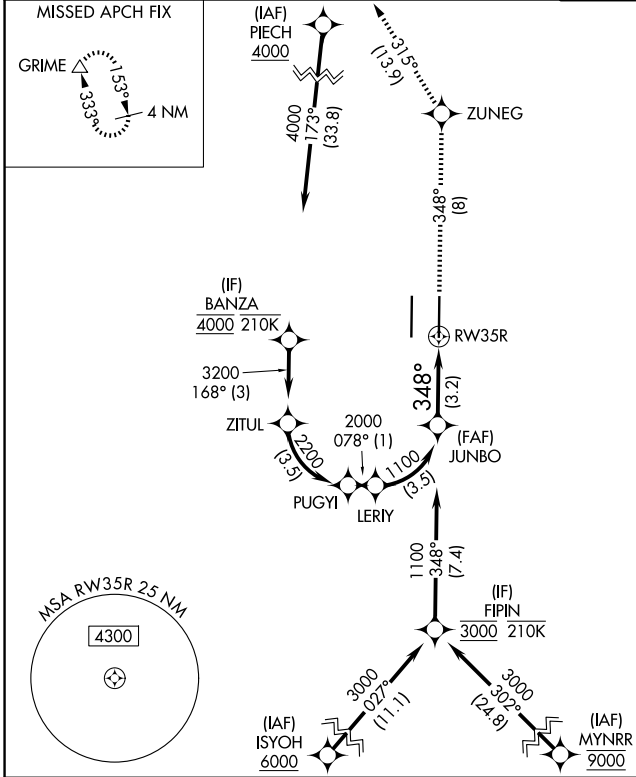
RNAV (RNP) Z RWY 35R

SACRAMENTO INTL (SMF)

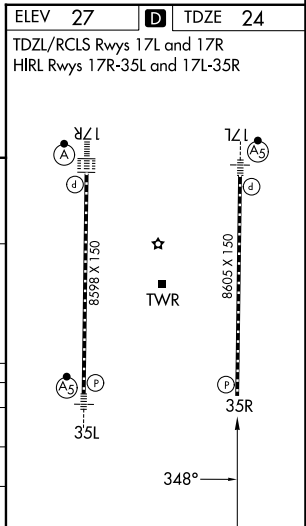
RNP AR APCH-GPS.
 ▼ For uncompensated Baro-VNAV systems, procedure NA below -2°C or above 54°C.

MISSED APPROACH: Climb to 2000 on track 348° to ZUNEG and on track 315° to GRIME and hold.

D-ATIS 126.75	NORCAL APP CON 125.4 259.1 (W-NE) 125.25 257.9 (SW) 127.4 317.5 (E-SE)	CAPITOL TOWER 125.7 256.7	GND CON 121.7 256.7
-------------------------	--	-------------------------------------	-------------------------------



JUNBO 1100	2000 tr 348°	ZUNEG tr 315°	GRIME △
GP 3.00° TCH 64	See planview for multiple IF locations.		
CATEGORY	A	B	C
RNP 0.10 DA		316/45	292 (300- $\frac{7}{8}$)
RNP 0.30 DA		384/55	360 (400-1)
AUTHORIZATION REQUIRED			



SW-2, 16 APR 2026 to 14 MAY 2026

SW-2, 16 APR 2026 to 14 MAY 2026