

SLMMR FIVE ARRIVAL (RNAV)

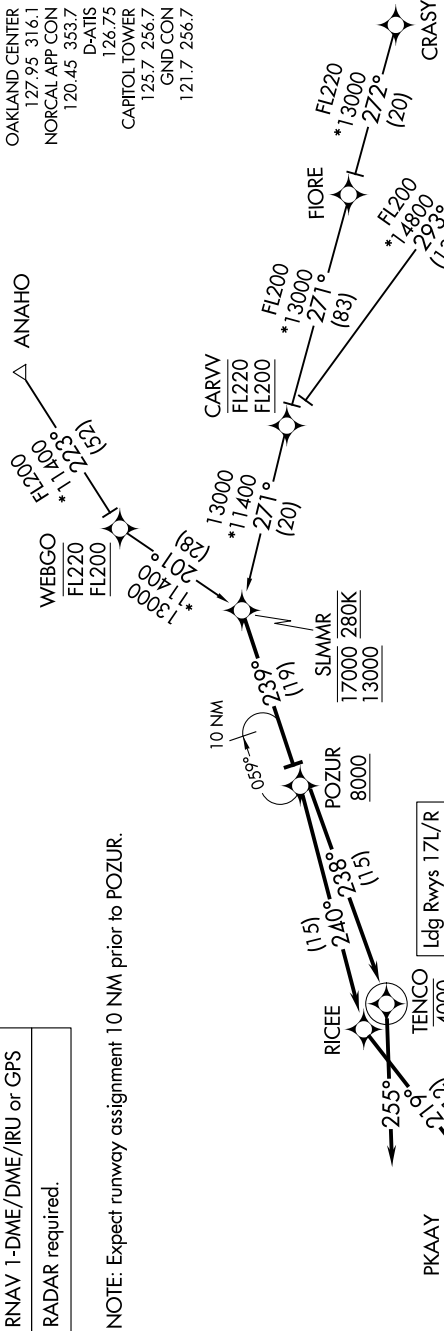
AL-5490 (FAA)

SACRAMENTO INTL (SMF)
SACRAMENTO, CALIFORNIA

SW-2, 16 APR 2026 to 14 MAY 2026

RNAV 1-DME/DME/IRU or GPS
RADAR required.

NOTE: Expect runway assignment 10 NM prior to POZUR.



ARRIVAL ROUTE DESCRIPTION

ANAHO TRANSITION (ANAHO.SLMMR5)
CARVV TRANSITION (CARVV.SLMMR5)
CRASY TRANSITION (CRASY.SLMMR5)
DONNR TRANSITION (DONNR.SLMMR5)
WEBGO TRANSITION (WEBGO.SLMMR5)

From SLMMR on track 239° to cross POZUR at or above 8000.
LANDING RUNWAYS 17L/R: From POZUR on track 238° to cross TENCO at 4000, then on track 255°. Expect RADAR vectors for assigned instrument approach procedure.
LANDING RUNWAYS 35L/R: From POZUR on track 240° to RICEE, then on track 219° to cross PKAAY at or above 6000 and at 210K, then on track 221° to THANN, then on track 168° to cross BANZA at 4000 and at 210K, then on track 168°. Expect RADAR vectors to final approach course.

NOTE: Chart not to scale.

SW-2, 16 APR 2026 to 14 MAY 2026