

# TUDOR TWO ARRIVAL

SACRAMENTO INTL (SMF)  
SACRAMENTO, CALIFORNIA

AL-5490 (FAA)

NORCAL APP CON  
120.45 353.7  
OAKLAND CENTER  
132.2 350.3

KLAMATH FALLS  
115.9 LMT  
Chan 106

LAKEVIEW  
112.0 LKV  
Chan 57

RED BLUFF  
115.7 RBL  
Chan 104

WILLIAMS  
114.4 IIA  
Chan 91

LOCALIZER  
111.1  
I-SMF  
Chan 48

SACRAMENTO  
115.2 SAC  
Chan 99

NOTE: RADAR required.

NOTE: Expect RADAR vectors to final approach course.

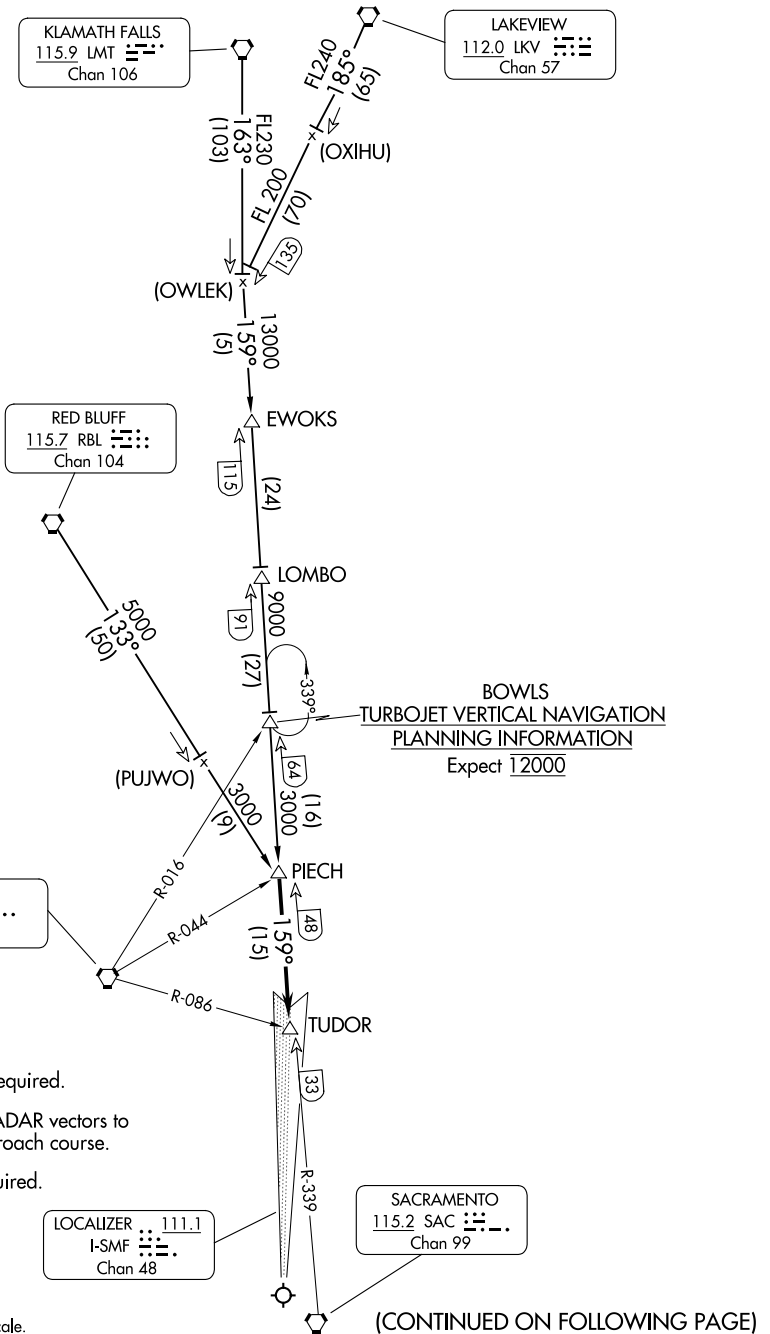
NOTE: DME required.

NOTE: Chart not to scale.

(CONTINUED ON FOLLOWING PAGE)

SW-2, 16 APR 2026 to 14 MAY 2026

SW-2, 16 APR 2026 to 14 MAY 2026



# TUDOR TWO ARRIVAL

SACRAMENTO, CALIFORNIA  
SACRAMENTO INTL (SMF)

ARRIVAL ROUTE DESCRIPTION

KLAMATH FALLS TRANSITION (LMT.TUDOR2): From over LMT VORTAC via LMT R-163 and SAC R-339 to PIECH INT. Thence . . . .

LAKEVIEW TRANSITION (LKV.TUDOR2): From over LKV VORTAC via LKV R-185 and SAC R-339 to PIECH INT. Thence . . . .

RED BLUFF TRANSITION (RBL.TUDOR2): From over RBL VORTAC via RBL R-133 to PIECH INT. Thence . . . .

. . . . From PIECH INT via SAC R-339 to TUDOR INT/DME. Expect RADAR vectors.

SW-2, 16 APR 2026 to 14 MAY 2026

SW-2, 16 APR 2026 to 14 MAY 2026