

WAAS CH <b>72734</b> <b>W04A</b>	APP CRS <b>035°</b>	Rwy Ldg TDZE Apt Elev	<b>3500</b> <b>854</b> <b>856</b>
--	------------------------	-----------------------------	---

# RNAV (GPS) RWY 4

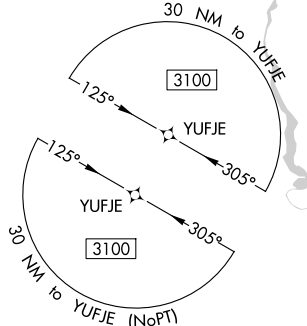
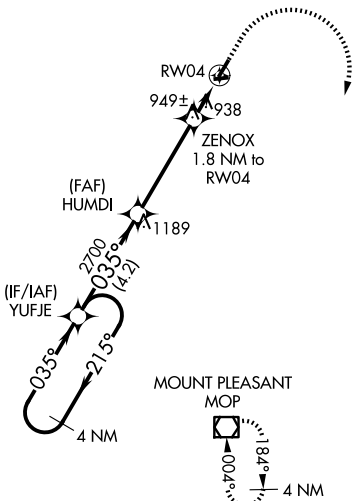
CLARE MUNI (48D)

RNP APCH

Use Mount Pleasant altimeter setting; when not received, use Midland altimeter setting and increase all MDA 60 feet. Rwy 4 helicopter visibility reduction below 3/4 SM NA. Circling Rwy 9, 27 NA at night.

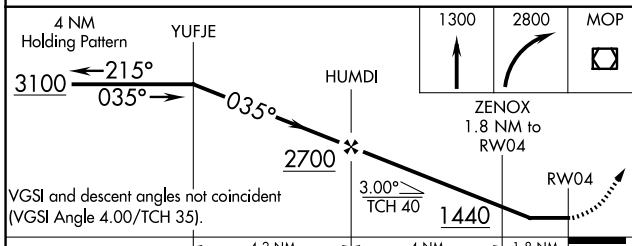
MISSED APPROACH: Climb to 1300, then climbing right turn to 2800 direct MOP VOR/DME and hold.

MOP AWOS-3P <b>133.025</b>	GREAT LAKES APP CON* <b>126.45 235.625</b>	UNICOM <b>122.8 (CTAF) 0</b>
-------------------------------	---	---------------------------------



EC-1, 16 APR 2026 to 14 MAY 2026

EC-1, 16 APR 2026 to 14 MAY 2026



	4.2 NM		4 NM		1.8 NM
CATEGORY	A	B	C	D	
LP MDA	1240-1	386 (400-1)	NA		
LNAV MDA	1260-1	406 (500-1)	NA		
CIRCLING	1380-1 524 (600-1)	1420-1 564 (600-1)	NA		

