

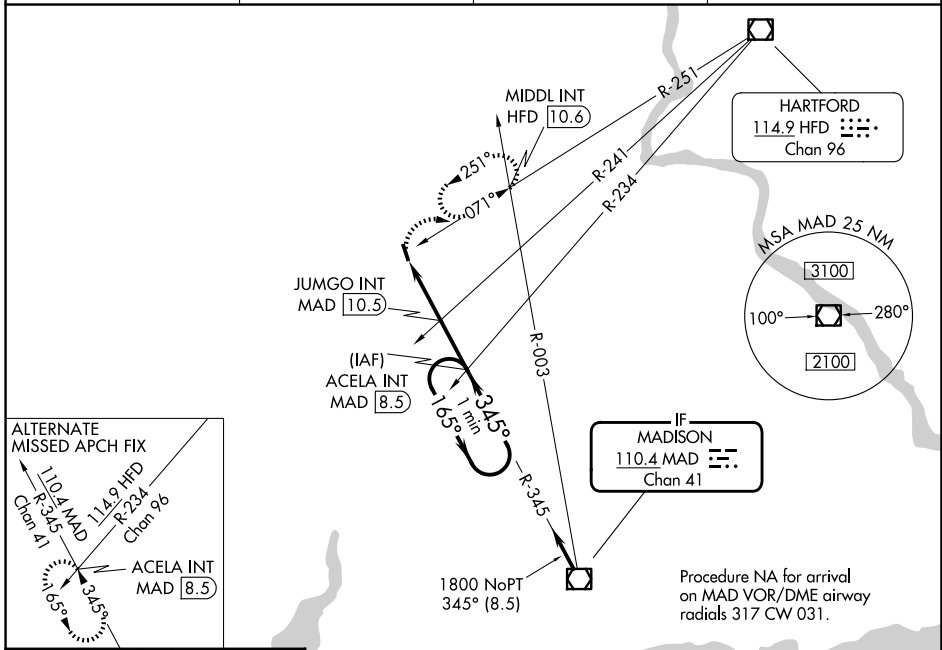
VOR/DME MAD	APP CRS	Rwy Ldg TDZE	3100
110.4	345°	99	
Chan 41		Apt Elev	103

VOR RWY 36

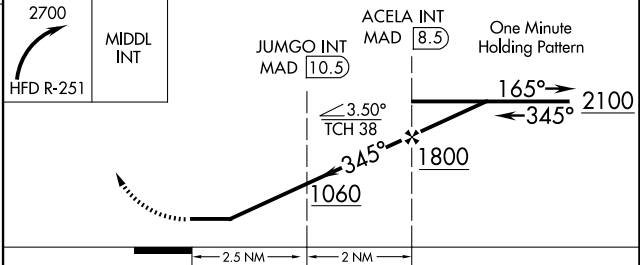
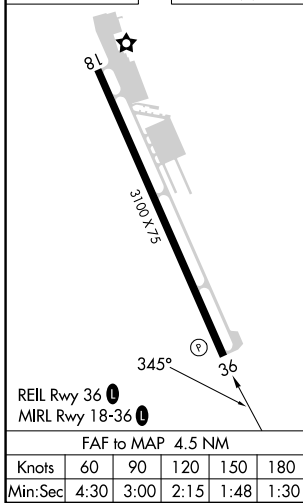
MERIDEN MARKHAM MUNI (MMK)

▼ Rwy 36 helicopter visibility reduction below 1 SM NA. Procedure NA at night.
▲ MISSED APPROACH: Climbing right turn to 2700 on HFD VOR/DME R-251 to MIDL INT/HFD 10.6 DME and hold, continue climb-in-hold to 2700.

ASOS 134.925	BRADLEY APP CON 127.8 269,325	CLNC DEL 120.65	UNICOM 123.05 (CTAF) ①
------------------------	---	---------------------------	---



ELEV 103	TDZE 99
----------	---------



CATEGORY	A	B	C	D
S-36	1060-1¼ 961 (1000-1½)	1060-1½ 961 (1000-1½)		NA
CIRCLING	1060-1¼ 957 (1000-1½)	1060-1½ 957 (1000-1½)		NA
JUMGO FIX MINIMUMS (DUAL VOR RECEIVERS OR DME REQUIRED)				
S-36	880-1 781 (800-1)	880-1¼ 781 (800-1½)		NA
CIRCLING	880-1 777 (800-1)	920-1¼ 817 (900-1½)		NA

NE-1, 16 APR 2026 to 14 MAY 2026

NE-1, 16 APR 2026 to 14 MAY 2026