

VOR/DME AHN <b>116.95</b> Chan <b>116(Y)</b>	APP CRS <b>319°</b>	Rwy Ldg TDZE Apt Elev	<b>5010</b> <b>951</b> <b>951</b>
--	------------------------	-----------------------------	---

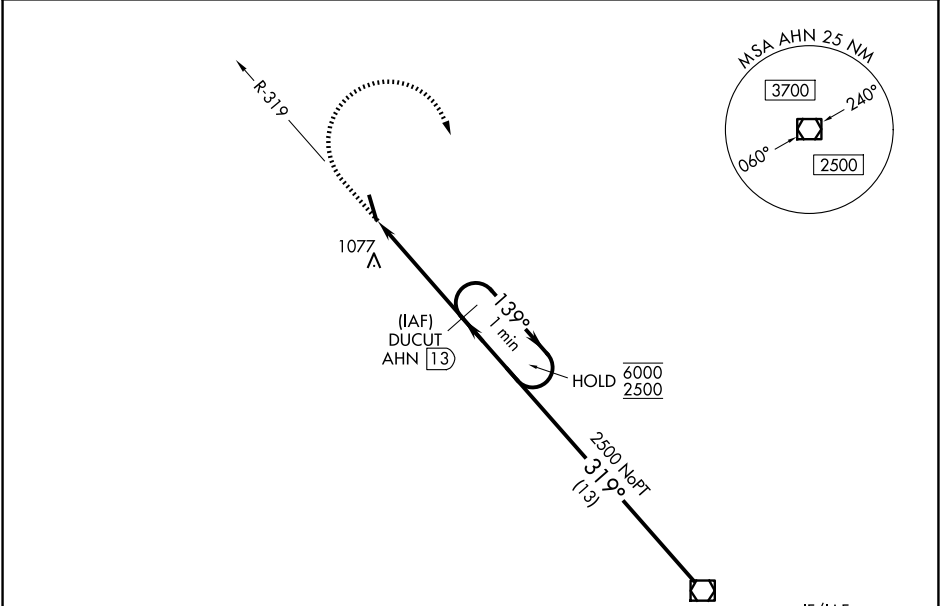
**VOR RWY 35**  
JACKSON COUNTY (JCA)

DME required.

**⚠** Circling NA for Cat D southwest of Rwy 17-35. Rwy 35 helicopter visibility reduction below 1 SM NA. Procedure NA at night. When local altimeter setting not received, use Winder altimeter setting and increase all MDA 40 feet and S-35 Cats C/D visibility 1/8 SM.

MISSED APPROACH: Climb to 1700 then climbing right turn to 2500 on heading 200° and AHN VOR/DME R-319 to DUCUT/AHN 13 DME and hold.

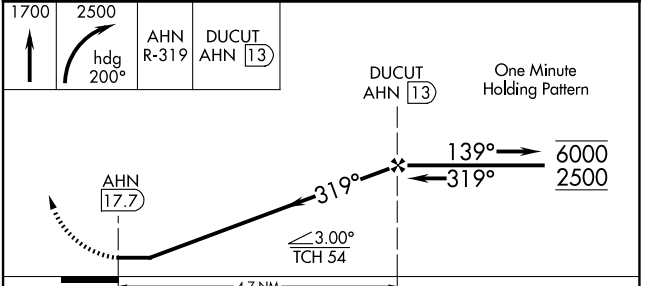
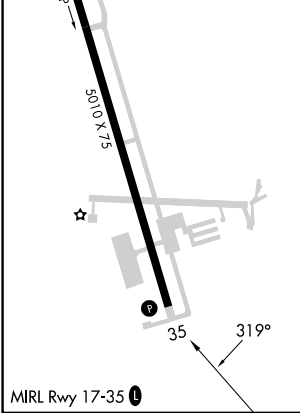
AWOS-3PT <b>118.125</b>	ATLANTA APP CON ★ <b>132.475 291.1</b>	UNICOM <b>122.975 (CTAF)</b>
----------------------------	---	---------------------------------



ELEV <b>951</b>	TDZE <b>951</b>
-----------------	-----------------

Procedure NA for arrival on AHN VOR/DME airway radials 297 CW 340.

IF/IAF  
ATHENS  
116.95 AHN  
Chan 116(Y)



CATEGORY	A	B	C	D
S-35	1380-1	429 (500-1)	1380-1¼	429 (500-1¼)
CIRCLING	1440-1	489 (500-1)	1580-1¾ 629 (700-1¾)	1580-2 629 (700-2)

SE-4, 16 APR 2026 to 14 MAY 2026

SE-4, 16 APR 2026 to 14 MAY 2026