


VORTAC SLT 113.9 Chan 86	APP CRS 264°	Rwy Idg 4300 TDZE 1934 Apt Elev 1934
--	------------------------	---

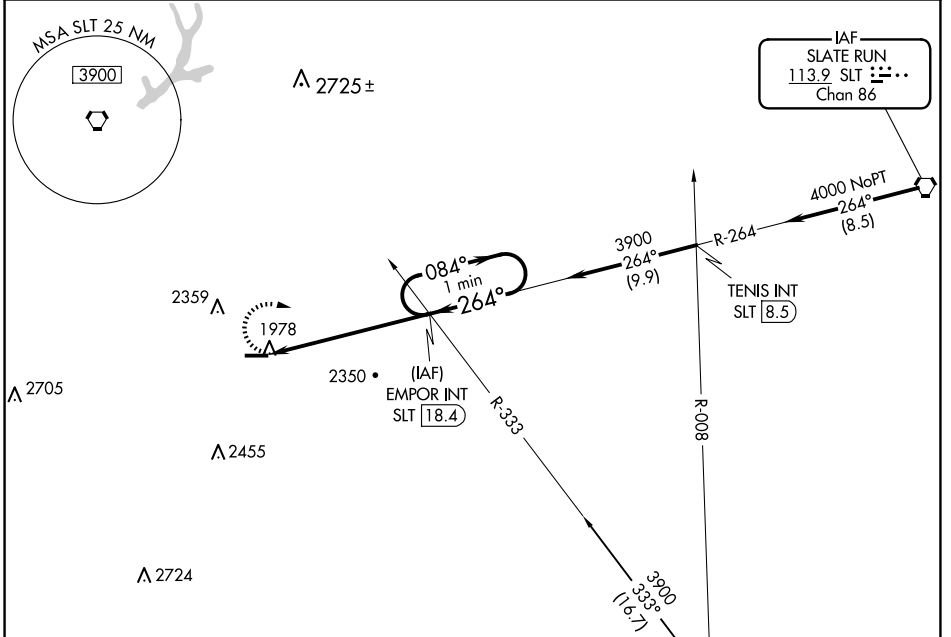
VOR RWY 28
ST MARYS MUNI (OYM)

⚠ Night landing: Rwy 28 NA. Helicopter visibility reduction below 1 SM NA. When local altimeter setting not received, use Bradford altimeter setting and increase all MDA 240 feet, and S-28 Cat B and Circling Cat B/C visibility ¼ mile and S-28 Cat C/D ½ mile. Inoperative table does not apply to Cats C/D.

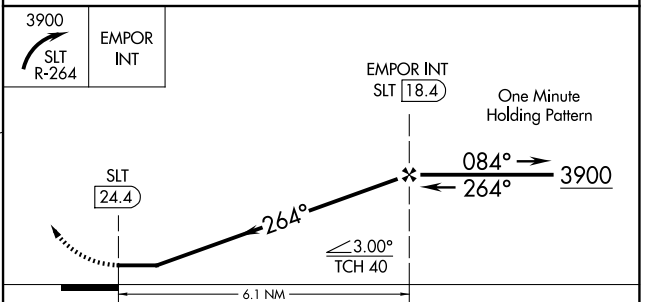
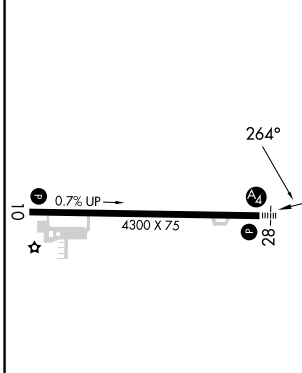
MALS 

MISSED APPROACH: Climbing right turn to 3900 via SLT R-264 to EMPOR INT/18.4 DME and hold.

AWOS-3P 118.05	CLEVELAND CENTER 126.725 291.65	ALTOONA CLNC DEL 122.4	UNICOM 122.7 (CTAF) 
--------------------------	---	----------------------------------	---



ELEV 1934	TDZE 1934
-----------	-----------



CATEGORY	A	B	C	D
S-28	2820-1	886 (900-1)	2820-2½	886 (900-2½)
CIRCLING	2820-1¼	886 (900-1¼)	2820-2¾	2820-3 886 (900-3)

NE-4, 16 APR 2026 to 14 MAY 2026

NE-4, 16 APR 2026 to 14 MAY 2026