

WAAS CH 62824 W28A	APP CRS 282°	Rwy Idg TDZE 969 Apt Elev 974	5060
--	------------------------	---	-------------

RNAV (GPS) RWY 28

POLK COUNTY/CORNELIUS MOORE FLD (4A4)

RNP APCH.

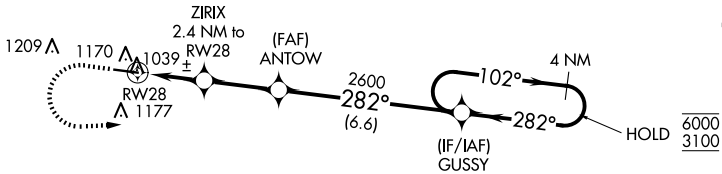
NA Baro-VNAV and VDP NA when using Cartersville altimeter setting. Rwy 28 helicopter visibility reduction below $\frac{3}{4}$ SM NA. For uncompensated Baro-VNAV systems, LNAV/VNAV NA below -8°C or above 54°C. Obtain local altimeter setting on CTAF, when not received, use Cartersville altimeter setting: increase LPV DA to 1287 feet; increase LNAV/VNAV DA to 1353 feet and all visibility $\frac{1}{2}$ SM; increase all MDAs 80 feet and visibility Cats C and D $\frac{1}{2}$ SM.

MISSED APPROACH:
Climb to 1500 then climbing left turn to 3100 direct GUSSY and hold.

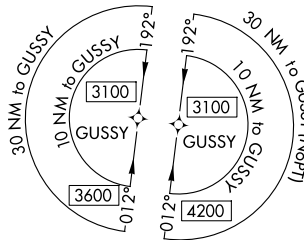
ATLANTA CENTER
124.5 270.325

UNICOM
122.8 (CTAF) 0

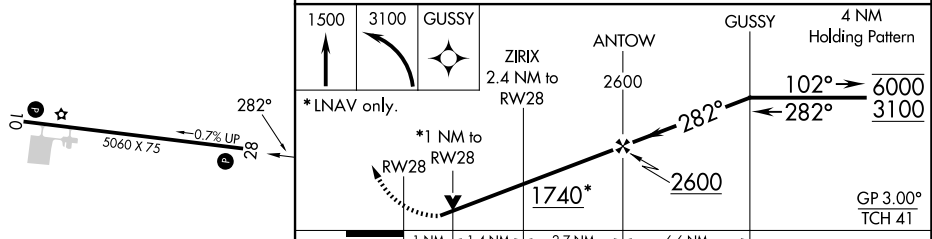
△ 1723



△ 1660



ELEV 974	TDZE 969
----------	----------



CATEGORY	A	B	C	D
LPV DA		1219-1	250 (300-1)	
LNAV/VNAV DA		1285-1	316 (400-1)	
LNAV MDA		1300-1	331 (400-1)	

MIRL Rwy 10-28 0

SE-4, 16 APR 2026 to 14 MAY 2026

SE-4, 16 APR 2026 to 14 MAY 2026