

WAAS CH 73038 W36A	APP CRS 002°	Rwy Ldg TDZE Apt Elev	4002 540 541
--	------------------------	-----------------------------	---

RNAV (GPS) RWY 36

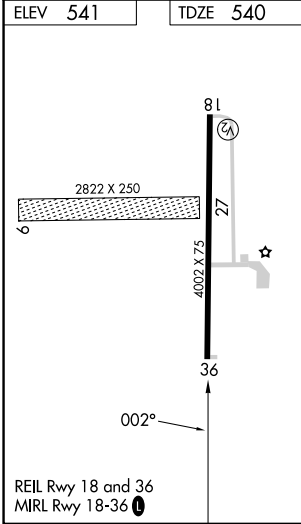
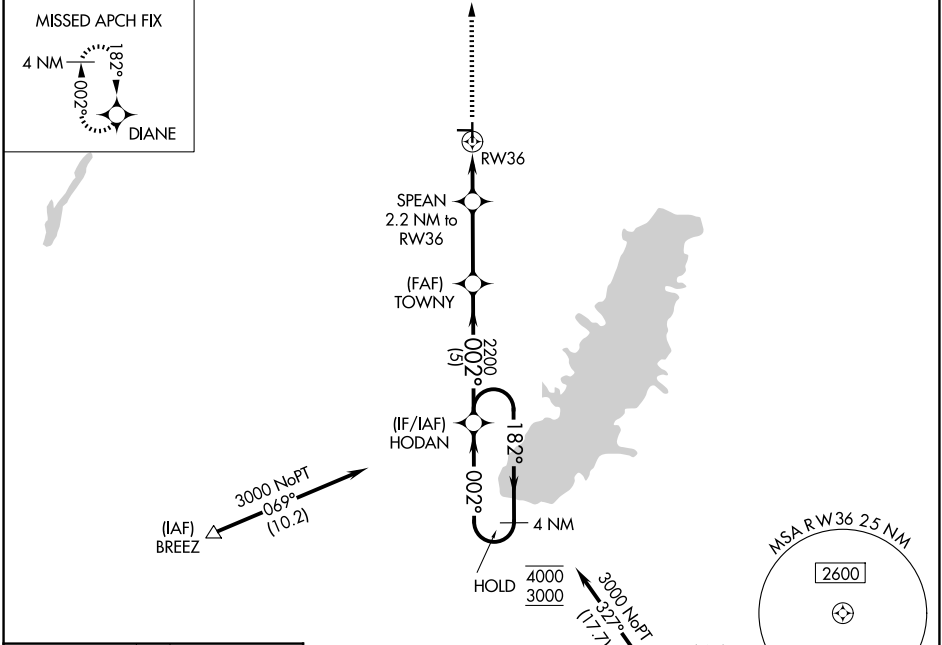
GREENVILLE (G.R.E)

RNP APCH - GPS.

⚠ Rwy 36 helicopter visibility reduction below 3/4 SM NA. For uncompensated Baro-VNAV systems, LNAV/VNAV NA below -16°C or above 54°C.
⚠ NA Circling NA to Rwys 9 and 27.

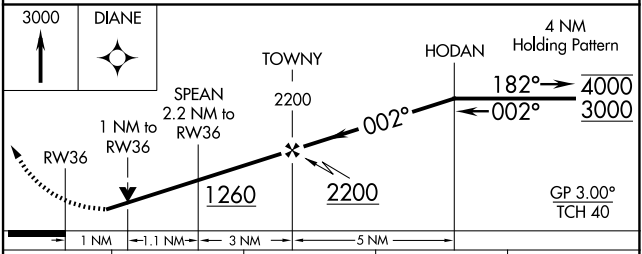
MISSED APPROACH: Climb to 3000 direct DIANE and hold.

AWOS-2 120.0	KANSAS CITY CENTER 124.3 269.15	UNICOM 123.05 (CTAF) 0
------------------------	---	----------------------------------



Procedure NA for arrival on ENL VORTAC
 airway radials 249 CW 042.

(IAF) CENTRALIA ENL



CATEGORY	A	B	C	D
LPV DA		790-1	250 (300-1)	
LNAV/VNAV DA		817-1	277 (300-1)	
LNAV MDA		900-1	360 (400-1)	
CIRCLING	960-1	1000-1	1160-1 3/4	1240-2 1/4
	419 (500-1)	459 (500-1)	619 (700-1 3/4)	699 (700-2 1/4)

EC-3, 16 APR 2026 to 14 MAY 2026

EC-3, 16 APR 2026 to 14 MAY 2026