

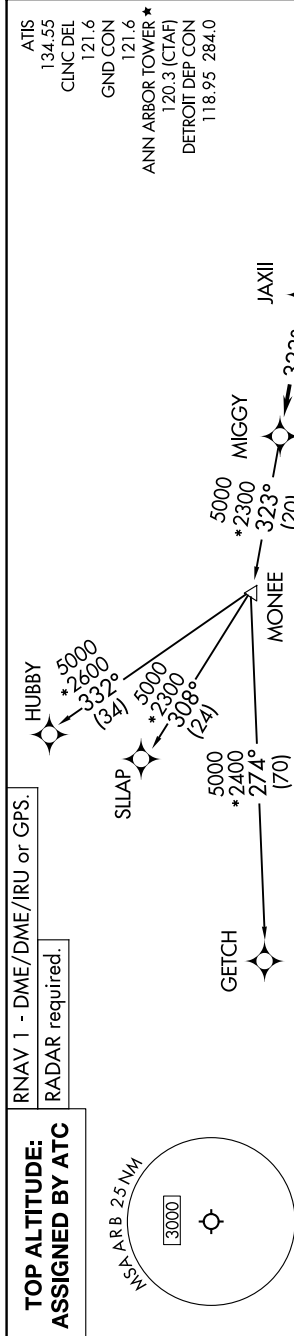
(MIGGY3.MIGGY) 24137

MIGGY THREE DEPARTURE (RNAV) AL-5506 (FAA)

ANN ARBOR MUNI (ARB)

ANN ARBOR, MICHIGAN

EC-1, 16 APR 2026 to 14 MAY 2026



TAKEOFF MINIMUMS:
 Rwy 12, 30: NA - Environmental.
 Rwy 6, 24: Standard.

NOTE: Jet departures at/above 10000, maintain 280K until advised by ATC.
NOTE: GETCH TRANSITION: For use by KMKE area arrivals only, or as assigned by ATC.

DEPARTURE ROUTE DESCRIPTION

TAKEOFF RUNWAY 6: Climb on heading 060° or as assigned by ATC, thence....
TAKEOFF RUNWAY 24: Climb on heading 240° or as assigned by ATC, thence....
for RADAR vectors to JAXII, then on track 323° to MIGGY, then on (transition).
 Maintain 17000 or as assigned by ATC, expect filed altitude 10 minutes after departure.

GETCH TRANSITION (MIGGY3.GETCH):
HUBBY TRANSITION (MIGGY3.HUBBY):
SLLAP TRANSITION (MIGGY3.SLLAP):



NOTE: Chart not to scale.

MIGGY THREE DEPARTURE (RNAV) (MIGGY3.MIGGY) 16MAY24

ANN ARBOR, MICHIGAN
ANN ARBOR MUNI (ARB)

EC-1, 16 APR 2026 to 14 MAY 2026