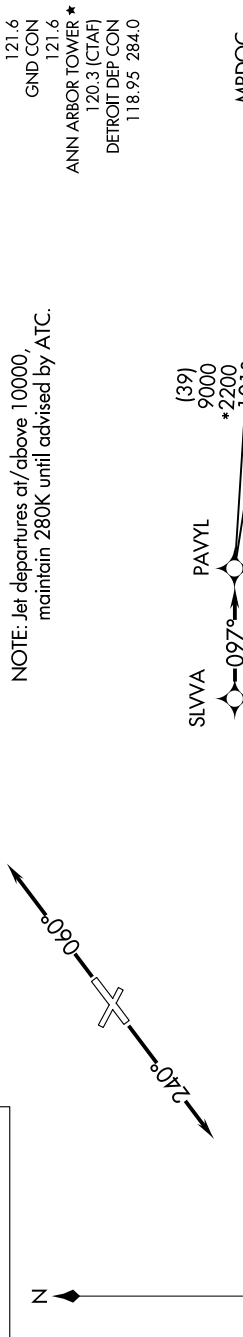
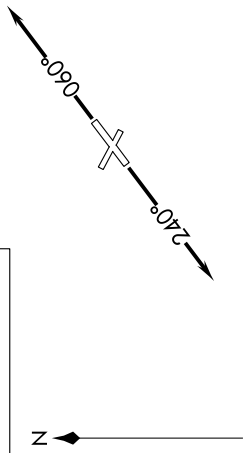


**TOP ALTITUDE:  
ASSIGNED BY ATC**

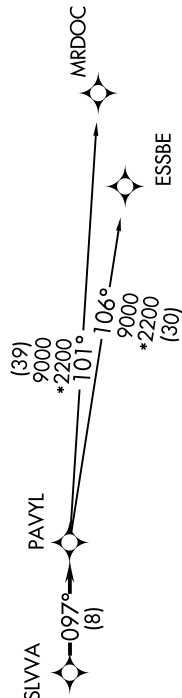
RNAV 1 - DME/DME/IRU or GPS.  
RADAR required.



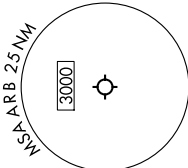
NOTE: Jet departures at /above 10000, maintain 280K until advised by ATC.



ATIS  
134.55  
CLNC DEL  
121.6  
GND CON  
121.6  
ANN ARBOR TOWER \*  
120.3 (CTAF)  
DETROIT DEP CON  
118.95 284.0



TAKEOFF MINIMUMS:  
Rwys 12, 30: NA - Environmental.  
Rwys 6, 24: Standard.



NOTE: Chart not to scale.

**DEPARTURE ROUTE DESCRIPTION**

**TAKEOFF RUNWAY 6:** Climb on heading 060° or as assigned by ATC, thence....  
**TAKEOFF RUNWAY 24:** Climb on heading 240° or as assigned by ATC, thence....  
 ...for RADAR vectors to SLVWA, then on track 097° to PAVYL, then on (transition). Maintain 17000 or as assigned by ATC, expect filed altitude 10 minutes after departure.  
**ESSBE TRANSITION (PAVYL3.ESSBE):**  
**MRDOC TRANSITION (PAVYL3.MRDOC):**