

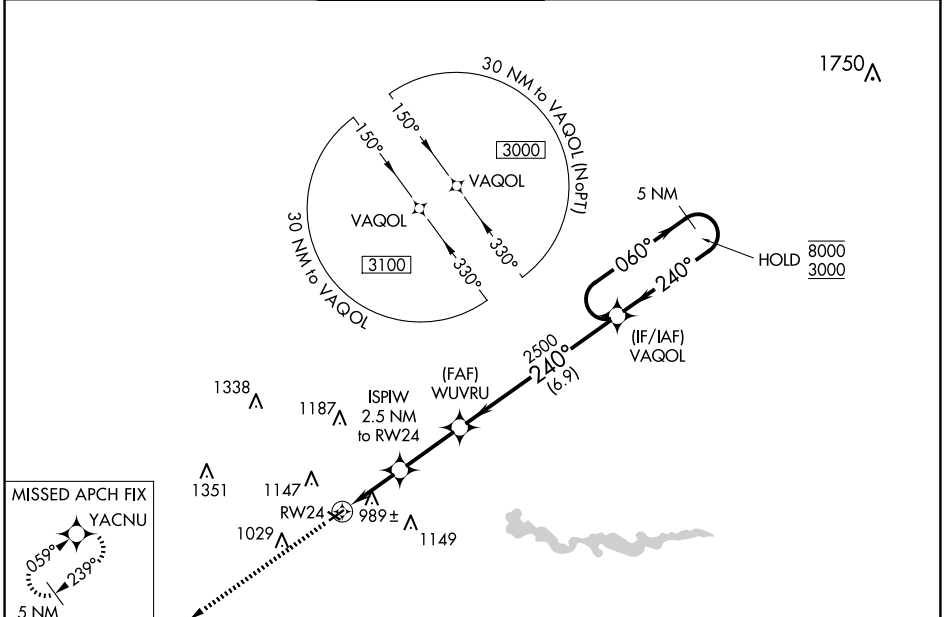
WAAS CH 61120 W24A	APP CRS 240°	Rwy Idg TDZE Apf Elev	3505 831 839
--	------------------------	-----------------------------	---

RNAV (GPS) RWY 24

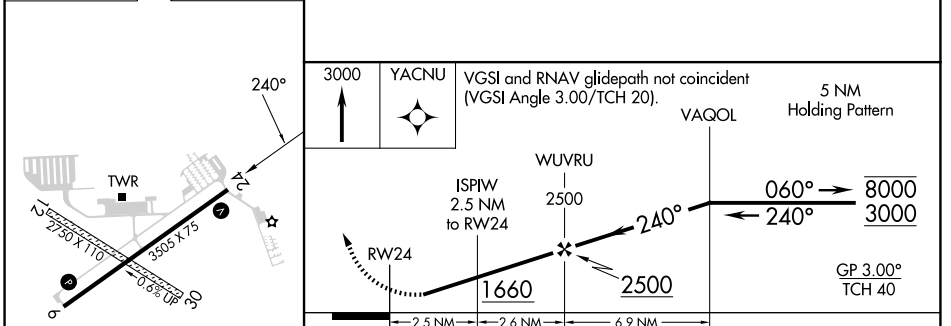
ANN ARBOR MUNI (A.R.B)

RNP APCH - GPS.		ANN ARBOR TOWER * 120.3 (CTAF) 0		GND CON 121.6	CLNC DEL 121.6	UNICOM 123.0
<p>⚠ Circling NA to Rwy 12 and 30. Rwy 24 helicopter visibility reduction below $\frac{3}{4}$ SM NA. For uncompensated Baro-VNAV systems, LNAV/VNAV NA below -16°C or above 38°C.</p>				<p>MISSED APPROACH: Climb to 3000 direct YACNU and hold.</p>		

ATIS 134.55	DETROIT APP CON 118.95 284.0	ANN ARBOR TOWER * 120.3 (CTAF) 0	GND CON 121.6	CLNC DEL 121.6	UNICOM 123.0
-----------------------	--	--	-------------------------	--------------------------	------------------------



ELEV 839	TDZE 831
----------	----------



VGSI and RNAV glidepath not coincident (VGSI Angle 3.00/TCH 20).	5 NM Holding Pattern			
VAQOL	8000 3000			
ISPIW 2.5 NM to RW24	2500			
WUVRU 2.6 NM	2500			
RW24	1660			
2.5 NM	2.6 NM	6.9 NM		
GP 3.00°	TCH 40			
CATEGORY	A	B	C	D
LPV DA	1132-1 301 (300-1)			
LNAV/VNAV DA	1170-1 339 (400-1)			
LNAV MDA	1300-1 469 (500-1)		1300-1 $\frac{3}{8}$ 469 (500-1 $\frac{3}{8}$)	

EC-1, 16 APR 2026 to 14 MAY 2026

EC-1, 16 APR 2026 to 14 MAY 2026