

EC-1, 16 APR 2026 to 14 MAY 2026

**TOP ALTITUDE:  
ASSIGNED BY ATC**

RNAV-1 DME/DME/IRU or GPS.  
RADAR required.

Detroit DEP CON  
118.95 284.0  
ATIS  
134.55  
CLNC DEL  
121.6  
GND CON  
121.6  
ANN ARBOR TOWER ★  
120.3 (CTAF)

**DEPARTURE ROUTE DESCRIPTION**

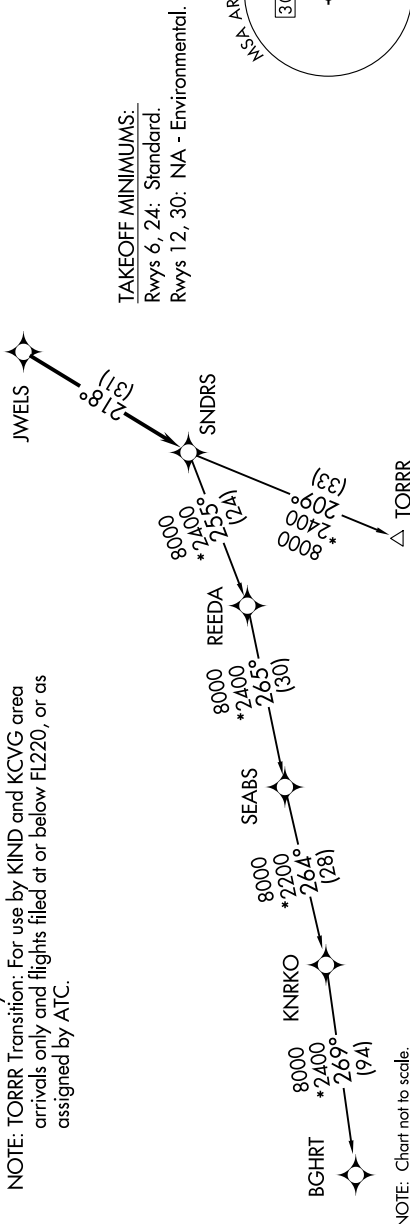
TAKEOFF RUNWAY 6: Climb on heading 060° or as assigned by ATC, thence....  
TAKEOFF RUNWAY 24: Climb on heading 240° or as assigned by ATC, thence....

....for RADAR vectors to JWELS, then on track 218° to SNDRS, then on (transition). Maintain ATC assigned altitude, expect filed altitude 10 minutes after departure.

BGHR T TRANSITION (SNDRS3.BGHR T):  
TORRR TRANSITION (SNDRS3.TORRR):

NOTE: Turbojet departures at/above 10000, maintain 280K until advised by ATC.

NOTE: TORRR Transition: For use by KIND and KCVG area arrivals only and flights filed at or below FL220, or as assigned by ATC.



NOTE: Chart not to scale.

EC-1, 16 APR 2026 to 14 MAY 2026