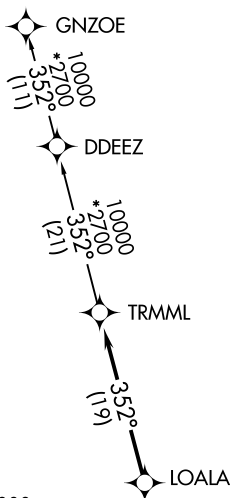


**TOP ALTITUDE:
ASSIGNED BY ATC**

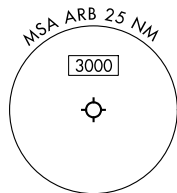
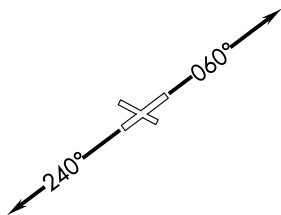
RNAV 1 - DME/DME/IRU or GPS.
RADAR required.

DETROIT DEP CON
118.95 284.0
ATIS
134.55
CLNC DEL
121.6
GND CON
121.6
ANN ARBOR TOWER *
120.3 (CTAF)



TAKEOFF MINIMUMS:
Rwys 12, 30: NA - Environmental.
Rwys 6, 24: Standard.

NOTE: Turbojet departures at/above 10000, maintain 280K until advised by ATC.



NOTE: Chart not to scale.

DEPARTURE ROUTE DESCRIPTION

TAKEOFF RUNWAY 6: Climb on heading 060° or as assigned by ATC, thence....

TAKEOFF RUNWAY 24: Climb on heading 240° or as assigned by ATC, thence....

...for RADAR vectors to LOALA, then on track 352° to TRMML, then on (transition). Maintain ATC assigned altitude, expect filed altitude 10 minutes after departure.

GNZOE TRANSITION (TRMML4.GNZOE):

EC-1, 16 APR 2026 to 14 MAY 2026

EC-1, 16 APR 2026 to 14 MAY 2026