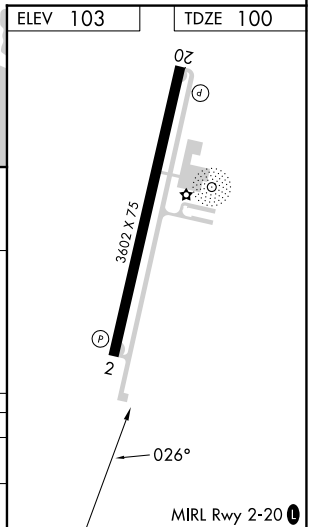
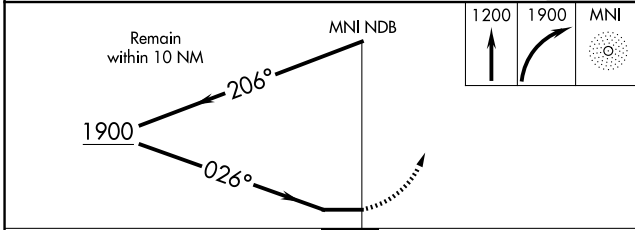
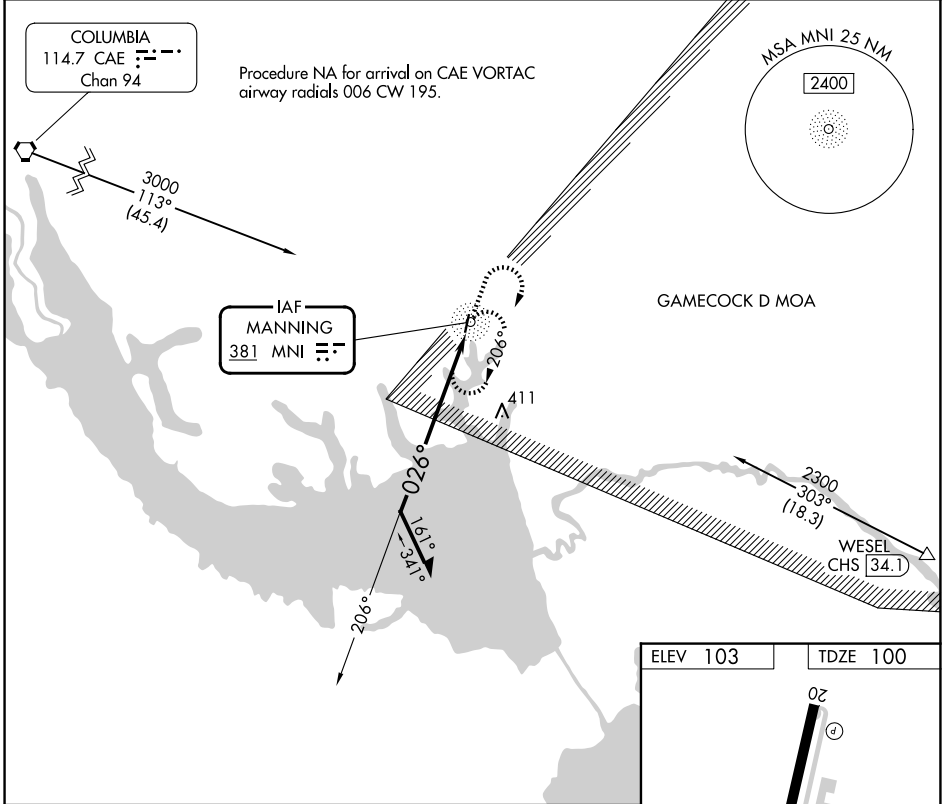


NDB MNI 381	APP CRS 026°	Rwy Ldg TDZE Apt Elev 3602 100 103
-----------------------	------------------------	--

NDB RWY 2
SANTEE COOPER RGNL (MNI)

<p>▼ ▲ NA</p> <p>Rwy 2 helicopter visibility reduction below 1 SM NA. Procedure NA at night.</p>	<p>MISSED APPROACH: Climb to 1200, then climbing right turn to 1900 direct MNI NDB and hold, continue climb-in-hold to 1900.</p>
--	--

<p>AWOS-3 120.175</p>	<p>SHAW APP CON★ 125.4 318.1</p>	<p>UNICOM 122.8 (CTAF) 0</p>
----------------------------------	---	---



CATEGORY	A	B	C	D
S-2	660-1	560 (600-1)	660-1½	560 (600-1½)
CIRCLING	660-1	557 (600-1)	800-2 697 (700-2)	800-2¼ 697 (700-2¼)

SE-2, 16 APR 2026 to 14 MAY 2026

SE-2, 16 APR 2026 to 14 MAY 2026