

|  |                        |                             |   |
|--|------------------------|-----------------------------|---|
| WAAS<br>CH <b>61337</b><br><b>W36A</b> | APP CRS<br><b>356°</b> | Rwy Ldg<br>TDZE<br>Apt Elev | <b>5001</b><br><b>1471</b><br><b>1477</b> |
|--|------------------------|-----------------------------|---|

# RNAV (GPS) RWY 36

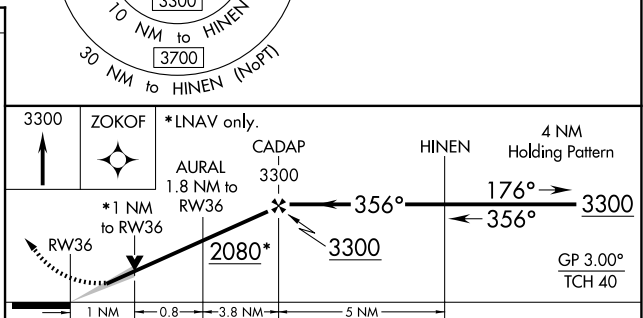
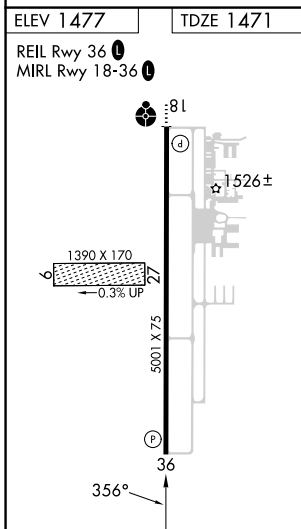
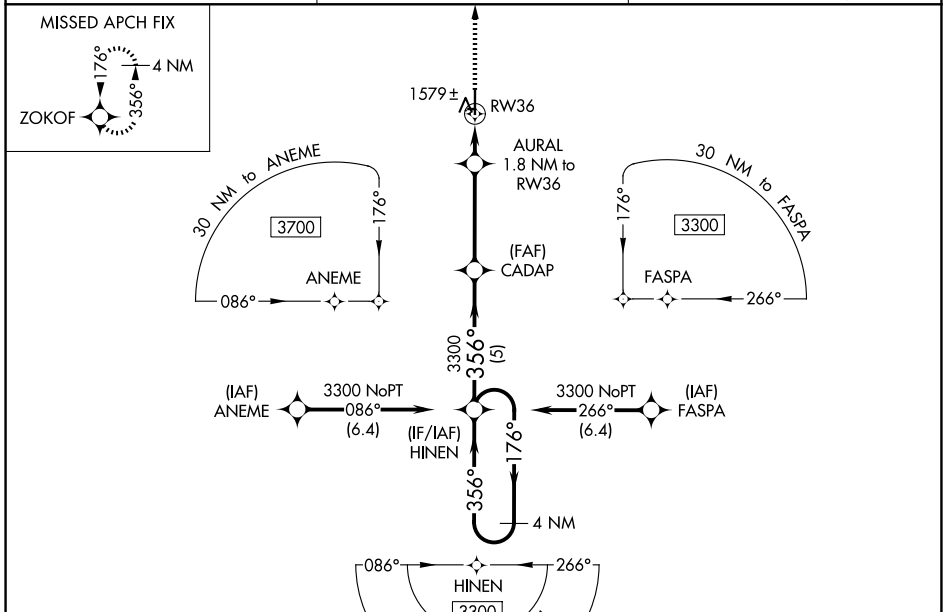
ALVA RGNL (AVK)

RNP APCH-GPS.

⚠ For uncompensated Baro-VNAV systems, LNAV/VNAV NA below -17°C (2°F) or above 54°C (130°F). When local altimeter setting not received, use Vance AFB altimeter setting and increase all DA 127 feet and all MDA 140 feet; increase LPV all Cats, LNAV/VNAV all Cats and LNAV Cat C visibility 3/8 mile and Circling Cat C visibility 1/2 mile. Baro-VNAV and VDP NA when using Vance AFB altimeter setting. Circling to Rwy 9/27 NA.

MISSED APPROACH:  
Climb to 3300 direct  
ZOKOF and hold.

|                            |  |                                 |
|----------------------------|--|---------------------------------|
| AWOS-3PT<br><b>121.125</b> | VANCE APP CON *<br><b>126.75 346.325</b> | UNICOM<br><b>122.8 (CTAF) 0</b> |
|----------------------------|--|---------------------------------|



| CATEGORY     | A                     | B                     | C                             | D  |
|--------------|-----------------------|-----------------------|-------------------------------|----|
| LPV DA       | 1721-7/8              | 250 (300-7/8)         |                               | NA |
| LNAV/VNAV DA | 1751-1                | 280 (300-1)           |                               | NA |
| LNAV MDA     | 1840-1                | 369 (400-1)           |                               | NA |
| CIRCLING     | 1980-1<br>503 (600-1) | 2120-1<br>643 (700-1) | 2220-2 1/4<br>743 (800-2 1/4) | NA |

SC-1, 16 APR 2026 to 14 MAY 2026

SC-1, 16 APR 2026 to 14 MAY 2026