

(DAWNN1.DAWNN) 23334  
**DAWNN ONE DEPARTURE**

AL-5514 (FAA)

SHELBYVILLE MUNI (G EZ)  
 SHELBYVILLE, INDIANA

ASOS  
 121.55  
 INDIANAPOLIS DEP CON  
 127.15 317.8

BRICKYARD  
 116.3 VHP  
 Chan 110

**TOP ALTITUDE:  
 ASSIGNED BY ATC**

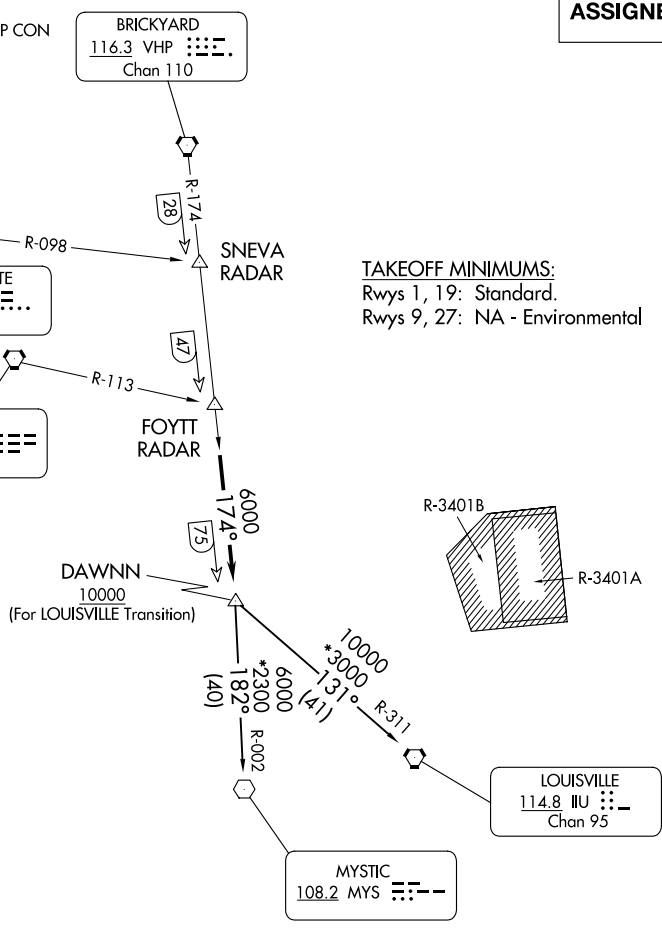
TERRE HAUTE  
 115.3 TTH  
 Chan 100

HOOSIER  
 110.2 OOM  
 Chan 39

**TAKEOFF MINIMUMS:**  
 Rwy 1, 19: Standard.  
 Rwy 9, 27: NA - Environmental

EC-2, 16 APR 2026 to 14 MAY 2026

EC-2, 16 APR 2026 to 14 MAY 2026



- NOTE: RADAR required.
- NOTE: Select appropriate localizer/DME frequency/channel prior to departure.
- NOTE: Turbojets accelerate to 250K until reaching 10000, if unable advise ATC.
- NOTE: Assigned to aircraft with a requested altitude of 11000 or above.

(NARRATIVE ON FOLLOWING PAGE)

NOTE: Chart not to scale.

**DAWNN ONE DEPARTURE**  
 (DAWNN1.DAWNN) 07DEC17

SHELBYVILLE, INDIANA  
 SHELBYVILLE MUNI (G EZ)



DEPARTURE ROUTE DESCRIPTION

DEPARTING ALL OTHER AUTHORIZED RUNWAYS/AIRPORTS: Climb on assigned heading to assigned altitude. Thence....

....on RADAR vectors to join VHP R-174 to DAWNN INT then on transition or assigned route. Expect clearance to requested altitude ten minutes after departure.

LOUISVILLE TRANSITION (DAWNN1.IIU): From over DAWNN INT on IIU R-311 to IIU VORTAC.

MYSTIC TRANSITION (DAWNN1.MYS): From over DAWNN INT on MYS R-002 to MYS VOR.

EC-2, 16 APR 2026 to 14 MAY 2026

EC-2, 16 APR 2026 to 14 MAY 2026