

(MAREO5.MAREO) 23334  
**MAREO FIVE DEPARTURE**

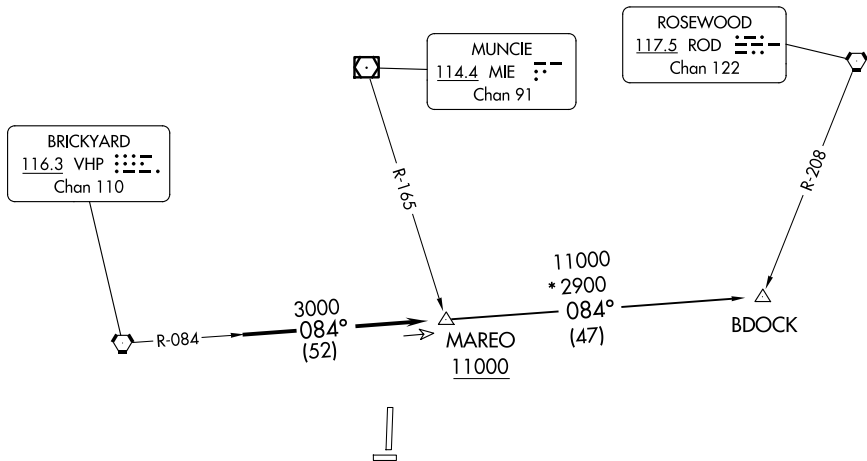
AL-5514 (FAA)

SHELBYVILLE MUNI (G/EZ)  
 SHELBYVILLE, INDIANA

ASOS  
 121.55  
 INDIANAPOLIS DEP CON  
 127.15 317.8

**TOP ALTITUDE:  
 ASSIGNED BY ATC**

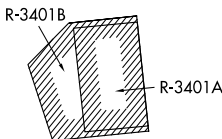
**TAKEOFF MINIMUMS**  
 Rwy 1, 19: Standard.  
 Rwy 9, 27: NA - Environmental.



EC-2, 16 APR 2026 to 14 MAY 2026

EC-2, 16 APR 2026 to 14 MAY 2026

- NOTE: RADAR required.
- NOTE: Select appropriate localizer/DME frequency/channel prior to departure.
- NOTE: Turbojets accelerate to 250K until reaching 10000, if unable advise ATC.
- NOTE: Assigned to aircraft with a requested altitude of 11000 or above.



NOTE: Chart not to scale.



**DEPARTURE ROUTE DESCRIPTION**

DEPARTING ALL OTHER AUTHORIZED RUNWAYS: Climb on assigned heading to assigned altitude. Thence...

...expect RADAR vectors to join VHP R-084 to MAREO INT then via transition or assigned route. Expect clearance to requested altitude ten minutes after departure.

BDOCK TRANSITION (MAREO5.BDOCK): From over MAREO INT via VHP R-084 to BDOCK INT.