

WAAS CH <b>53603</b> <b>W19A</b>	APP CRS <b>189°</b>	Rwy Ldg TDZE Apt Elev	<b>5000</b> <b>803</b> <b>803</b>
----------------------------------------	------------------------	-----------------------------	-----------------------------------------

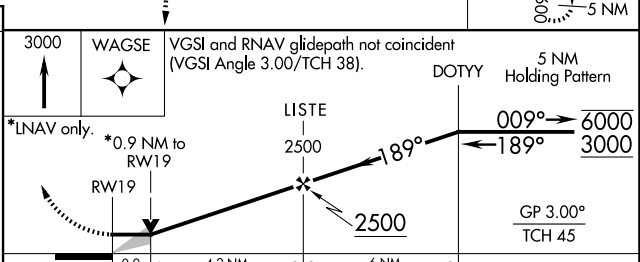
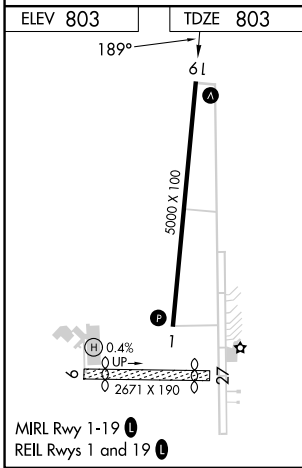
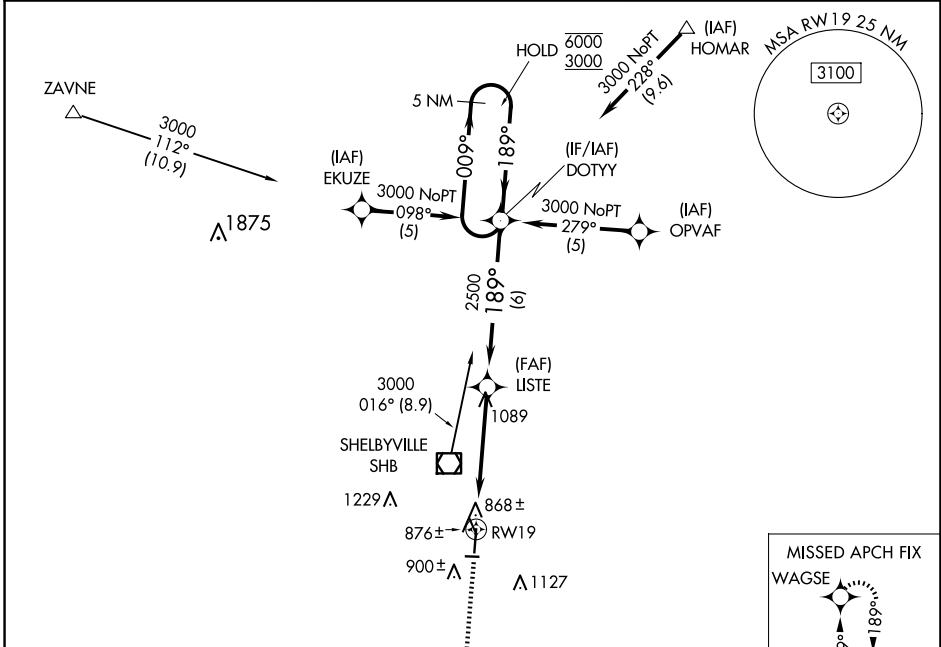
**RNAV (GPS) RWY 19**  
SHELBYVILLE MUNI (G/E/Z)

RNP APCH.

**⚠** Circling Rwy 9, 27 NA at night. Baro-VNAV NA when using Indianapolis Intl altimeter setting. For uncompensated Baro-VNAV systems, LNAV/VNAV NA below -16°C or above 54°C. VDP NA when using Indianapolis Intl altimeter setting. When local altimeter setting not received, use Indianapolis Intl altimeter setting: increase LPV DA to 1152 feet and LNAV/VNAV DA to 1199 feet; increase all MDA 60 feet and LNAV Cat C/D visibility 1/8 SM and Circling Cat D visibility 1/4 SM.

**MISSED APPROACH:**  
Climb to 3000 direct WAGSE and hold.

ASOS <b>121.55</b>	INDIANAPOLIS APP CON <b>127.15 317.8</b>	UNICOM <b>122.8 (CTAF) 0</b>
-----------------------	---------------------------------------------	---------------------------------



CATEGORY	A	B	C	D
LPV DA		1095-1	292 (300-1)	
LNAV/VNAV DA		1142-1¼	339 (400-1¼)	
LNAV MDA		1140-1	337 (400-1)	
CIRCLING	1240-1	1480-1	1480-2	1540-2¼
	437 (500-1)	677 (700-1)	677 (700-2)	737 (800-2¼)

EC-2, 16 APR 2026 to 14 MAY 2026

EC-2, 16 APR 2026 to 14 MAY 2026