


LOC/DME I-GVL 110.55 Chan 42 (Y)	APP CRS 044°	Rwy Ldg 5370 TDZE 1275 Apt Elev 1277
------------------------------------------------------	------------------------	-----------------------------------------------------------------

ILS or LOC RWY 5

LEE GILMER MEML (GVL)

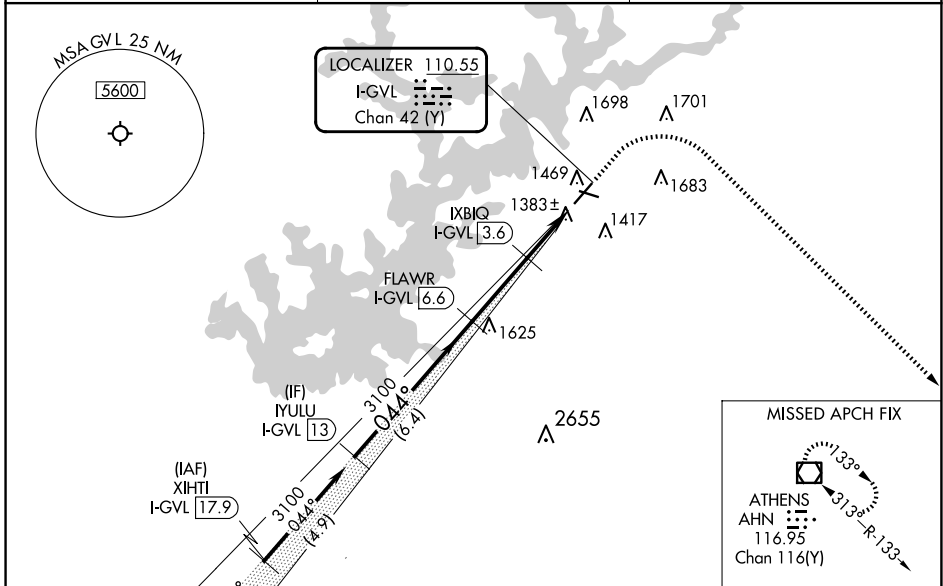
DME required.
RADAR required for procedure entry.

⚠ Circling Rwy 11, 29 NA at night.
⚠ For inop ALS increase S-LOC 5 Cats C and D visibility to 1 SM.

MALSR 

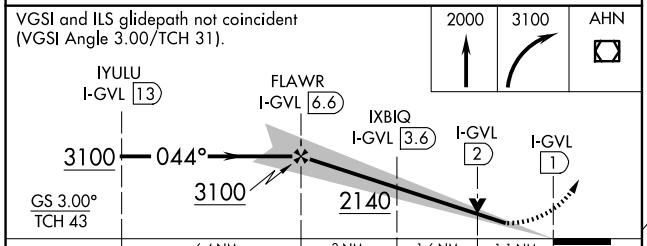
MISSED APPROACH: Climb to 2000 then climbing right turn to 3100 direct AHN VOR/DME and hold.

ASOS 126.475	ATLANTA APP CON* 132.475 291.1	UNICOM 123.075 (CTAF) 
------------------------	------------------------------------------	-------------------------------------------------------------------------------------------------------------------

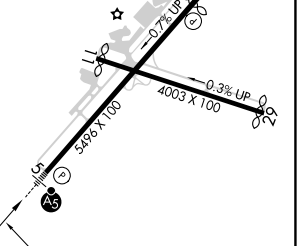


VGSI and ILS glidepath not coincident (VGSI Angle 3.00/TCH 31).

2000 3100 AHN 



ELEV 1277	D TDZE 1275
-----------	--------------------



CATEGORY	A	B	C	D
S-ILS 5	1475-1/2 200 (200-1/2)			
S-LOC 5	1640-1/2	365 (400-1/2)	1640-5/8	365 (400-5/8)
CIRCLING	1780-1 503 (600-1)	2000-1 723 (800-1)	2000-2 723 (800-2)	2020-2 1/2 743 (800-2 1/2)

FAF to MAP 5.6 NM					
Knots	60	90	120	150	180
Min:Sec	5:36	3:44	2:48	2:14	1:52

SE-4, 16 APR 2026 to 14 MAY 2026

SE-4, 16 APR 2026 to 14 MAY 2026