

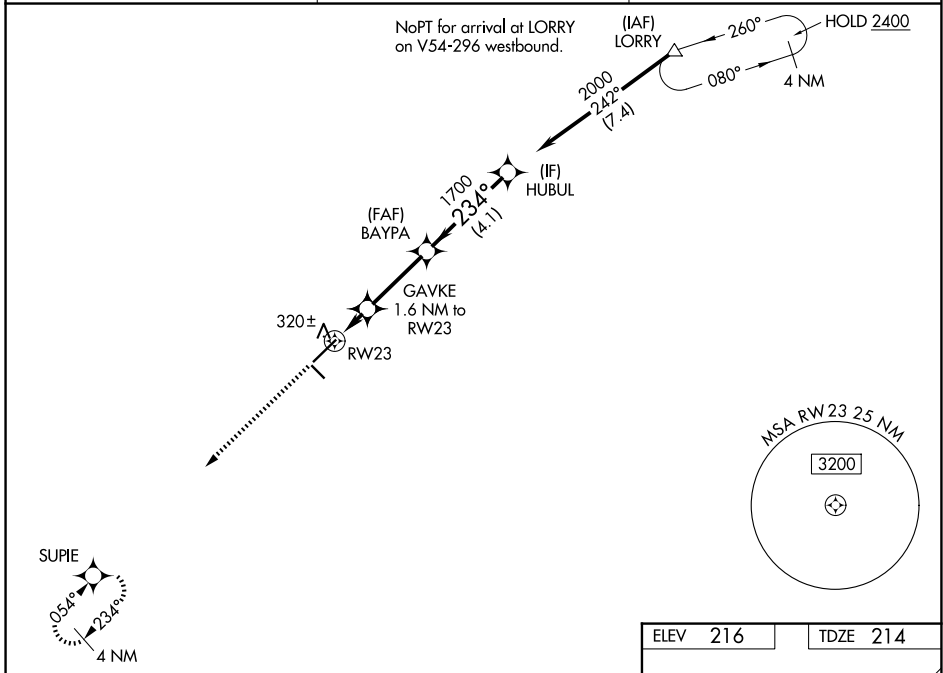
WAAS CH 61023 W23A	APP CRS 234°	Rwy Ldg TDZE 214 Apt Elev 216	6316
--	------------------------	---	-------------

RNAV (GPS) RWY 23

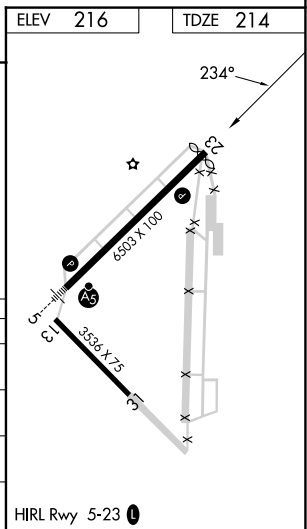
LAURINBURG/MAXTON (MEB)

RNP APCH-GPS.	MISSED APPROACH: Climb to 2000 direct SUPIE and hold.
<p>▼ Circling to Rwy 13 and 31 NA at night. Rwy 23 helicopter visibility reduction below 3/4 SM NA. For uncompensated Baro-VNAV systems, LNAV/VNAV NA below -11°C or above 54°C.</p> <p>▲</p>	

ASOS 134.125	FAYETTEVILLE APP CON 127.8 343.725	UNICOM 122.8 (CTAF) 0
------------------------	--	---------------------------------



2000	SUPIE				
↑	☆				
<p>1.1 NM to RWY 23</p> <p>1.6 NM to RWY 23</p> <p>1700</p> <p>234°</p> <p>2000</p> <p>GP 3.00°</p> <p>TCH 38</p>					
<p>1.1 NM</p> <p>0.5 NM</p> <p>3 NM</p> <p>4.1 NM</p>					
CATEGORY	A	B	C	D	
LPV DA		483-7/8	269 (300-7/8)		
LNAV/VNAV DA		483-7/8	269 (300-7/8)		
LNAV MDA		580-1	366 (400-1)		
CIRCLING	740-1	524 (600-1)	780-1½ 564 (600-1½)	1020-2½ 804 (900-2½)	



SE-2, 16 APR 2026 to 14 MAY 2026

SE-2, 16 APR 2026 to 14 MAY 2026