

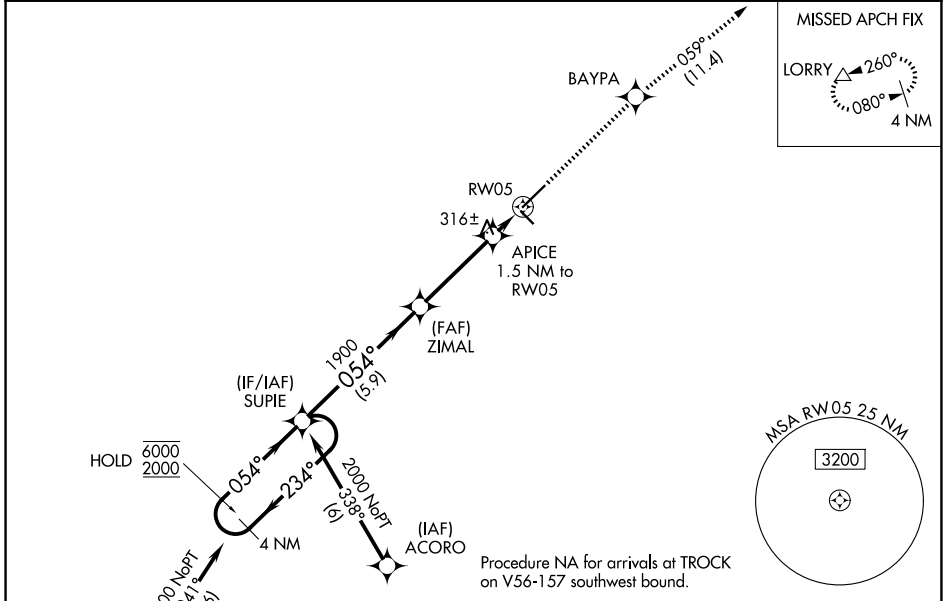
WAAS CH <b>90423</b> <b>W05A</b>	APP CRS <b>054°</b>	Rwy Ldg TDZE <b>216</b> Apt Elev <b>216</b>	<b>6503</b>
--	------------------------	---	-------------

# RNAV (GPS) RWY 5

LAURINBURG/MAXTON (MEB)

RNP APCH.	MALSRS	MISSED APPROACH: Climb to 2400 direct BAYPA and on track 059° to LORRY and hold.
<p>⚠ Circling to Rwy 13 and 31 NA at night. For uncompensated Baro-VNAV systems, LNAV/VNAV NA below -15°C or above 42°C. For inop ALS, increase LNAV/VNAV all Cats visibility to ¾ SM, and LNAV Cat C/D visibility to 1 SM.</p>		

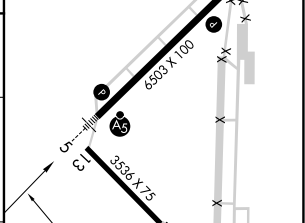
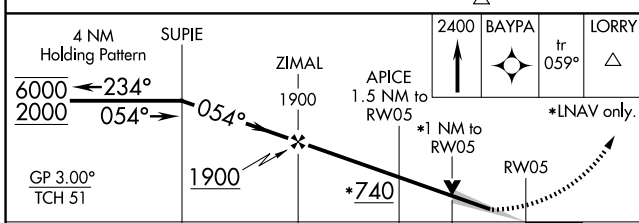
ASOS <b>134.125</b>	FAYETTEVILLE APP CON <b>127.8 343.725</b>	UNICOM <b>122.8 (CTAF)</b>
------------------------	--	-------------------------------



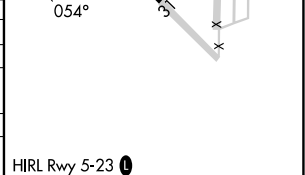
Procedure NA for arrivals at TROCK on V56-157 southwest bound.

Procedure NA for arrivals at DUNGY on V3 southbound.

ELEV 216	TDZE 216
----------	----------



CATEGORY	A	B	C	D
LPV DA		416-½	200 (200-½)	
LNAV/VNAV DA		472-½	256 (300-½)	
LNAV MDA	580-½	364 (400-½)	580-⅝	364 (400-⅝)
CIRCLING	740-1	524 (600-1)	780-1½ 564 (600-1½)	1020-2½ 804 (900-2½)



SE-2, 16 APR 2026 to 14 MAY 2026

SE-2, 16 APR 2026 to 14 MAY 2026