

LOC/DME I-PGV 110.7 Chan 44	APP CRS 197°	Rwy Ldg 6505 TDZE 25 Apt Elev 26
---	------------------------	---

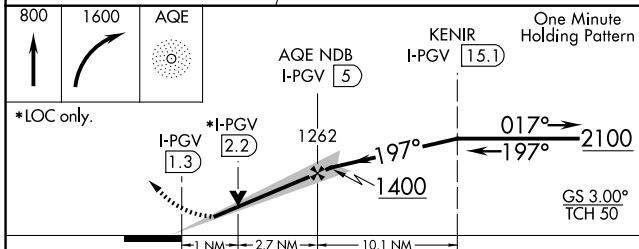
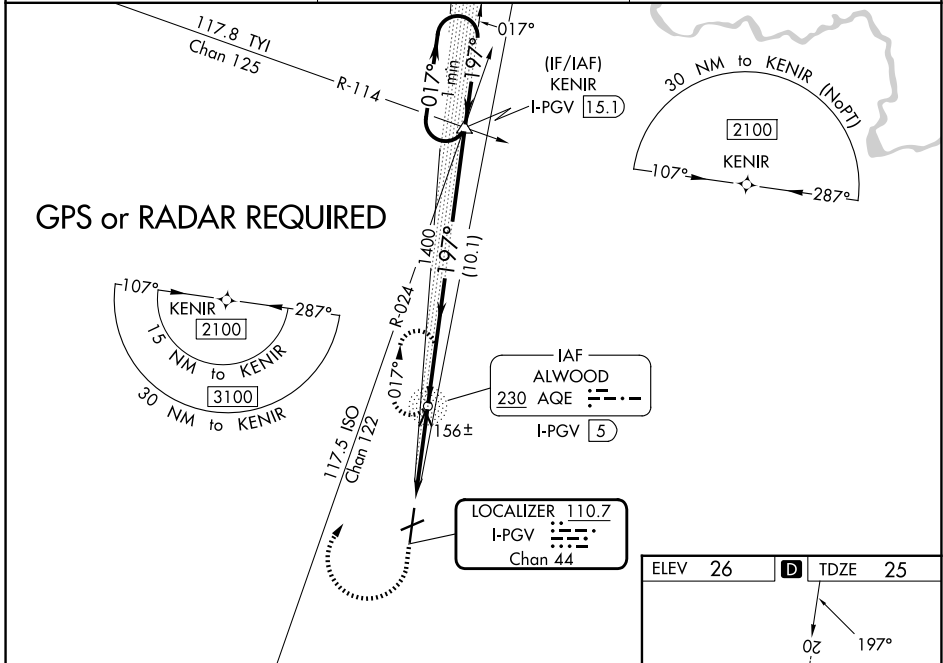
ILS Y or LOC Y RWY 20

PITT-GREENVILLE (PGV)

ADF required. VDP NA with Washington altimeter setting. When local altimeter setting not received use Washington altimeter setting and increase S-ILS 20 DA to 298 feet; increase all MDAs 60 feet and S-LOC 20 visibility Cat C/D 1/2 SM, and Circling visibility Cat D 1/4 SM. For inop ALS when using Washington altimeter setting, increase S-ILS 20 all Cats visibility 3/8 SM, and S-LOC 20 visibility Cat A/B 1/4 SM. Inop table does not apply to S-ILS all Cats. Rwy 20 helicopter visibility reduction below 3/4 SM NA. For inop ALS, increase S-LOC 20 visibility Cat A/B 1/4 SM, Cat C/D 3/8 SM.

MALSRS MISSED APPROACH: Climb to 800 then climbing right turn to 1600 direct AQE NDB and hold.

AWOS-3 128.425	WASHINGTON CENTER 123.85 279.65	UNICOM 122.8 (CTAF) 1
--------------------------	---	---------------------------------



ELEV 26	D	TDZE 25
---------	----------	---------

20 197°

AS

7175 X 150

4997 X 150

8 9 10 11 12 13 14 15 16 17 18 19 20 21 22 23 24 25 26 27 28 29 30 31 32 33 34 35 36 37 38 39 40 41 42 43 44 45 46 47 48 49 50

HIRL Rwy 2-20 1

MIRL Rwy 8-26 1

REIL Rwys 2, 8, and 26

FAF to MAP 3.7 NM					
Knots	60	90	120	150	180
Min:Sec	3:42	2:28	1:51	1:29	1:14

CATEGORY	A	B	C	D
S-ILS 20		257-3/4	231 (300-3/4)	
S-LOC 20		420-3/4	394 (400-3/4)	
CIRCLING	600-1 574 (600-1)	620-1 594 (600-1)	700-2 674 (700-2)	800-2 1/2 774 (800-2 1/2)

SE-2, 16 APR 2026 to 14 MAY 2026

SE-2, 16 APR 2026 to 14 MAY 2026