

LOC/DME I-PGV <b>110.7</b> Chan <b>44</b>	APP CRS <b>197°</b>	Rwy Ldg <b>6505</b> TDZE <b>25</b> Apt Elev <b>26</b>
---	------------------------	---

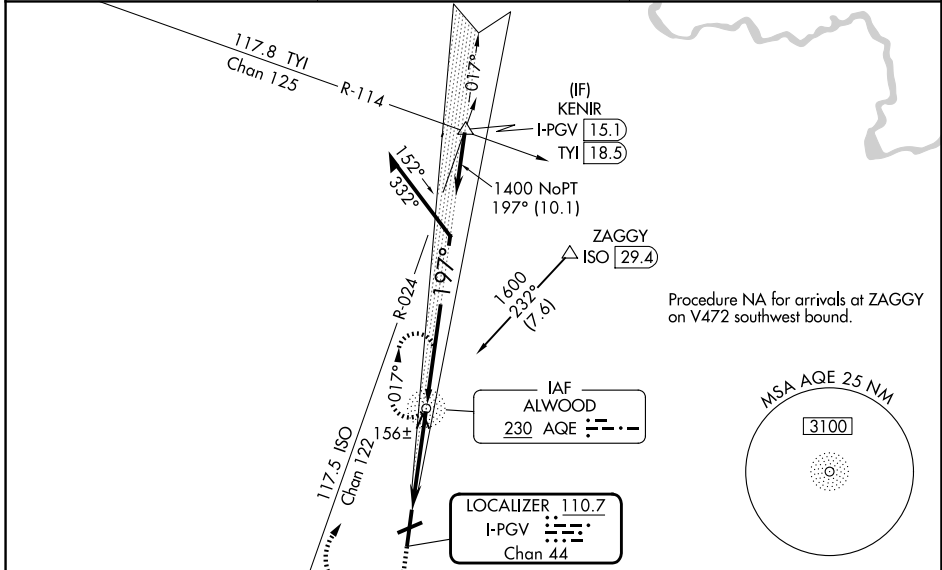
# ILS Z or LOC Z RWY 20

PITT-GREENVILLE (PGV)

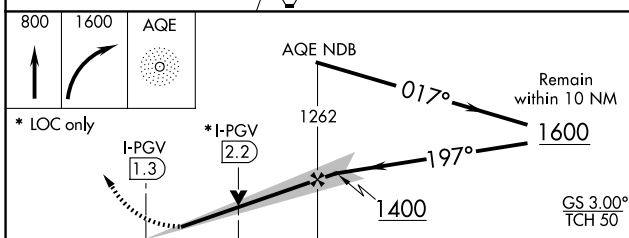
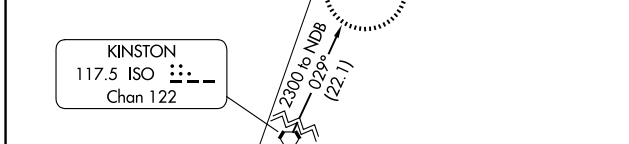
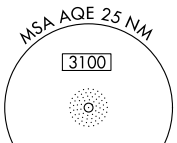
**NA** ADF required. VDP NA with Washington altimeter setting. When local altimeter setting not received use Washington altimeter and increase S-ILS 20 DA to 298 feet; increase all MDAs 60 feet and S-LOC 20 visibility Cat C/D 1/2 SM, and Circling visibility Cat D 1/4 SM. For inop ALS when using Washington altimeter setting, increase S-ILS 20 all Cats visibility 3/8 SM, and S-LOC 20 visibility Cat A/B 1/4 SM. Inop table does not apply to S-ILS all Cats. Rwy 20 helicopter visibility reduction below 3/4 SM NA. For inop ALS, increase S-LOC 20 visibility Cat A/B 1/4 SM, Cat C/D 3/8 SM.

**MALSR**  
MISSED APPROACH: Climb to 800 then climbing right turn to 1600 direct AGE NDB and hold.

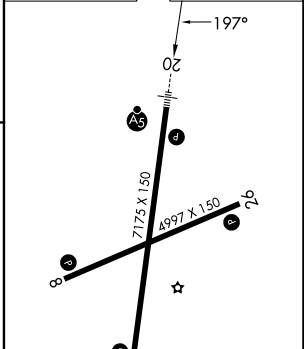
AWOS-3 <b>128.425</b>	WASHINGTON CENTER <b>123.85 279.65</b>	UNICOM <b>122.8 (CTAF)</b>
--------------------------	---	-------------------------------



Procedure NA for arrivals at ZAGGY on V472 southwest bound.



ELEV 26	<b>D</b> TDZE 25
---------	------------------



CATEGORY	A	B	C	D
S-ILS 20		257-3/4	231 (300-3/4)	
S-LOC 20		420-3/4	394 (400-3/4)	
CIRCLING	600-1 574 (600-1)	620-1 594 (600-1)	700-2 674 (700-2)	800-2 1/2 774 (800-2 1/2)

FAF to MAP 3.7 NM					
Knots	60	90	120	150	180
Min:Sec	3:42	2:28	1:51	1:29	1:14

SE-2, 16 APR 2026 to 14 MAY 2026

SE-2, 16 APR 2026 to 14 MAY 2026