

WAAS CH 87011 W20A	APP CRS 197°	Rwy Ldg TDZE Apt Elev	6505 25 26
--	------------------------	-----------------------------	---------------------------------------

RNAV (GPS) RWY 20

PITT-GREENVILLE (PGV)

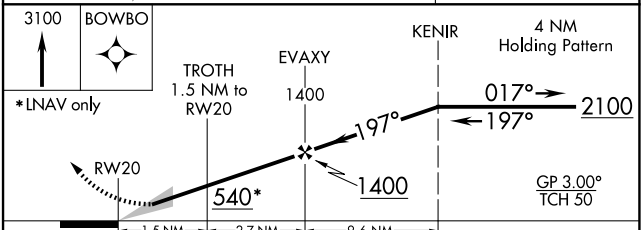
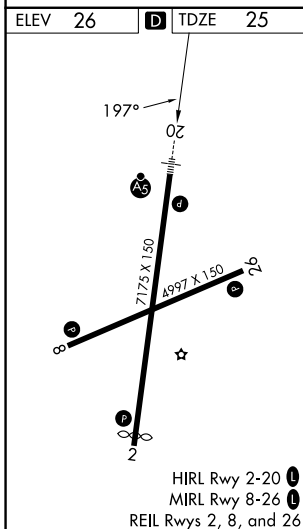
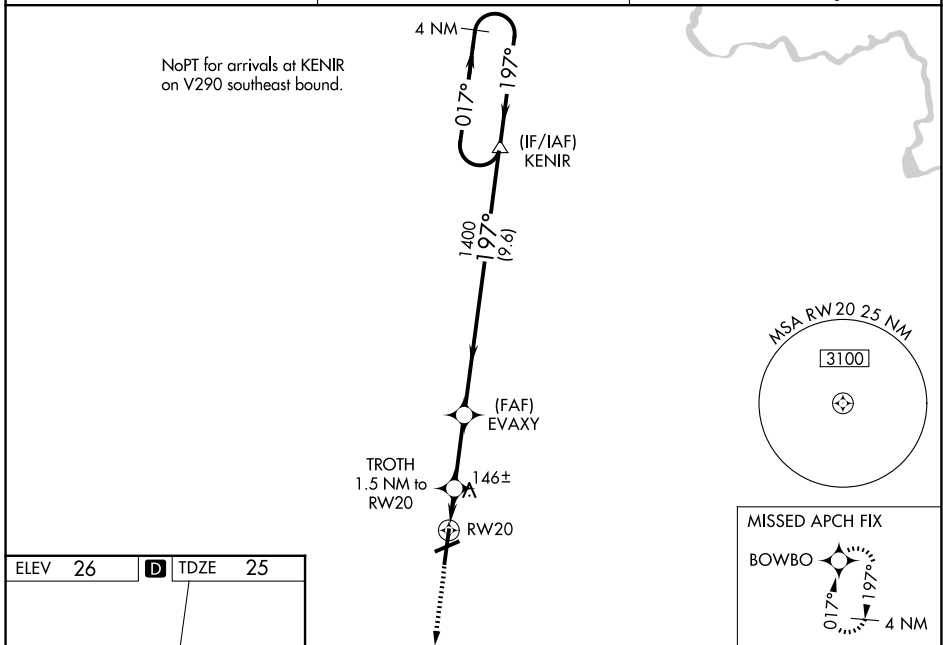
RNP APCH - GPS.

⚠ Baro-VNAV NA when using Washington altimeter setting. For uncompensated Baro-VNAV systems, LNAV/VNAV NA below -15°C or above 50°C. When local altimeter setting not received use Washington altimeter setting and increase LPV DA to 272 feet; increase LNAV/VNAV DA to 345; increase all MDAs 60 feet and Circling visibility Cat D ¼ SM. For inop ALS, increase LNAV/VNAV all Cats visibility to ¾ mile and LNAV all Cats visibility to 1 mile. For inop ALS when using Washington altimeter setting, increase LNAV/VNAV all Cats visibility ½ SM, and LNAV visibility Cat A/B ¼ SM. Rwy 20 helicopter visibility reduction below ¾ SM NA.



MISSED APPROACH:
Climb to 3100 direct BOWBO and hold, continue climb-in-hold to 3100.

AWOS-3 128.425	WASHINGTON CENTER 123.85 279.65	UNICOM 122.8 (CTAF) 0
--------------------------	---	---------------------------------



CATEGORY	A	B	C	D
LPV DA		231-1/2	205 (300-1/2)	
LNAV/VNAV DA		304-3/4	278 (300-3/4)	
LNAV MDA		400-3/4	374 (400-3/4)	
CIRCLING	600-1 574 (600-1)	620-1 594 (600-1)	700-2 674 (700-2)	800-2 1/2 774 (800-2 1/2)

SE-2, 16 APR 2026 to 14 MAY 2026

SE-2, 16 APR 2026 to 14 MAY 2026