

WAAS CH <b>53711</b> <b>W26A</b>	APP CRS <b>256°</b>	Rwy Ldg <b>4997</b> TDZE <b>24</b> Apt Elev <b>26</b>
--	------------------------	---

# RNAV (GPS) RWY 26

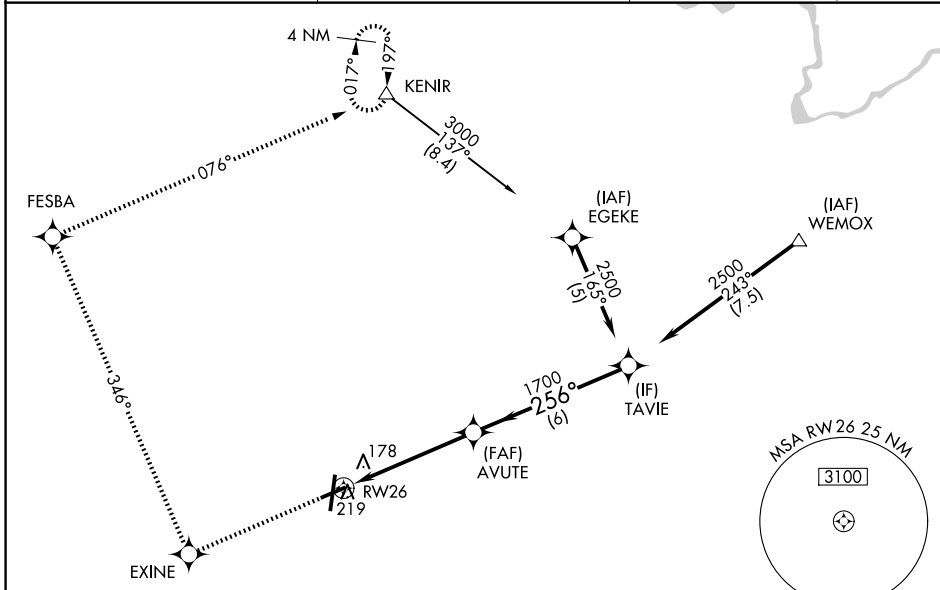
PITT-GREENVILLE (PGV)

RNP APCH - GPS.

▼ Baro-VNAV NA when using Washington altimeter setting. For uncompensated Baro-VNAV systems, LNAV/VNAV NA below -15°C or above 48°C. Rwy 26 helicopter visibility reduction below ¾ SM NA. When local altimeter setting not received use Washington altimeter setting and increase LPV DA to 376 feet, visibility all Cats ¼ SM; increase LNAV/VNAV DA to 505, visibility all Cats ½ SM; increase all MDAs 60 feet, LNAV visibility Cat C and D and Circling Cat D ¼ SM.

MISSED APPROACH: Climb to 3000 direct EXINE and via 346° track to FESBA and via 076° track to KENIR and hold.

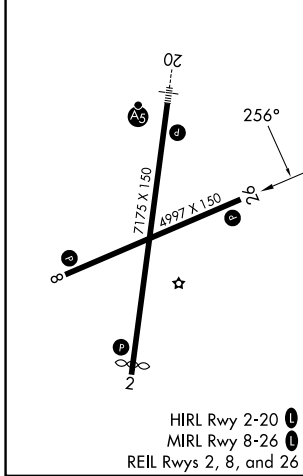
AWOS-3 <b>128.425</b>	WASHINGTON CENTER <b>123.85 279.65</b>	UNICOM <b>122.8 (CTAF) 0</b>
--------------------------	---	---------------------------------



SE-2, 16 APR 2026 to 14 MAY 2026

SE-2, 16 APR 2026 to 14 MAY 2026

ELEV 26	<b>D</b>	TDZE 24
---------	----------	---------



3000	EXINE	tr 346°	FESBA	tr 076°	KENIR	VGSIs and descent angles not coincident (VGSIs Angle 3.00/TCH 40).				
						TAVIE	Procedure Turn NA			
						2500	GP 3.00° TCH 45			
							5.1 NM      6 NM			
CATEGORY	A		B		C		D			
LPV DA	335-7/8		311 (400-7/8)							
LNAV/VNAV DA	464-1 1/4		440 (500-1 1/4)							
LNAV MDA	520-1		496 (500-1)		520-1 3/8		496 (500-1 3/8)			
CIRCLING	600-1		620-1		700-2		800-2 1/2			
	574 (600-1)		594 (600-1)		674 (700-2)		774 (800-2 1/2)			